



Designed by installers,
made by Philips

The Pronto Product Family

pronto

PHILIPS

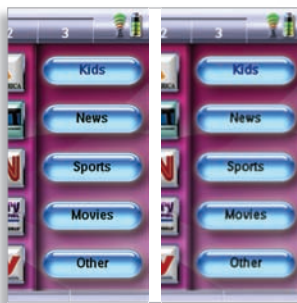
sense and simplicity

From home theatre

Today, custom installation is becoming more accessible. More home entertainment users want professional action-based control of their digital home entertainment system. Moreover, there is a growing need for integrated home automation applications like lighting and climate control - all with a few simple clicks from one single control panel. The Pronto control solution, available via a select group of dedicated distributors and certified installers, perfectly addresses the new needs of this fast paced market. The control panels, TSU9600 and TSU9400, and extenders, RFX9600 and RFX9400, can be used to control a wide range of custom home control systems, including exclusive two-way real-time interaction functionality.



Elegant, perfectly flush top surface



VGA resolution versus 'quarter' VGA

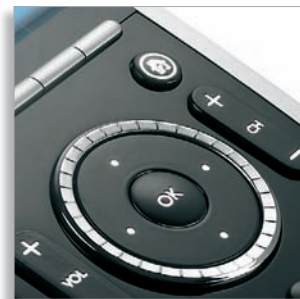


Installers will instantly recognize the Pronto TSU9600. Sensational design and a breathtaking color display give the TSU9600 instant appeal. Besides its trademark landscape alignment, there's the razor-sharp top-of-the-line 3.7 inch touch-screen display with full VGA (640 x 480 pixels) -- the highest resolution found on any touch-screen remote currently in this market segment. This shows icons, images and text from the the user interface with unbelievable clarity and definition. It also has an exceptionally wide viewing angle, combining comfort, convenience and style.

to automated home



A smooth-to-the-touch unit that fits comfortably in your hand



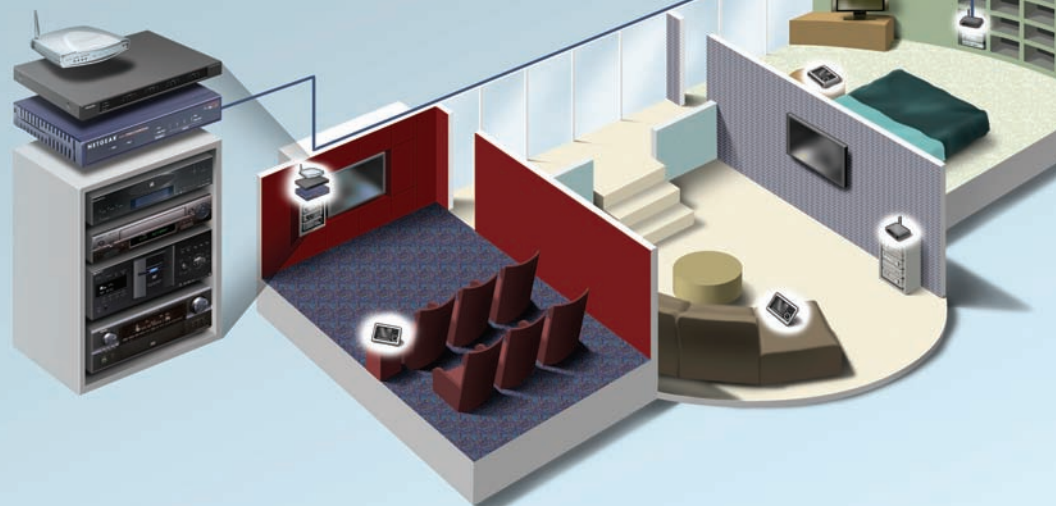
Ergonomic rotary wheel for slick (media) control

The new vertically aligned Pronto TSU9400 features a bright vivid touch screen. Ultra-thin with a stunning 3.5 inch QVGA color touch screen ideal for graphics, a rotary wheel for easy multimedia scrolling and conveniently placed buttons, the Pronto TSU9400 is a hybrid of full functionality and designer looks. It will blend into practically any modern interior with its geometric aluminum and black gloss finishing. The backlit buttons and Pronto logo emit a soft white glow giving the Pronto TSU9400 an ultra-cool finishing touch when placed in its matching docking station to recharge.

pronto

The perfect extensions for complete system integration

The entire Pronto family of remote controls and extenders are designed to be flexible enough for the most demanding custom installations. A high level of reliability is guaranteed thanks to the unique WiFi-based Pronto protocol, which verifies the command and extender availability prior to transmission. In short, this makes the Pronto wireless solution extremely dependable.



RFX9400

To support total home control and multi-room wireless and wired remote control installations, two types of extenders are available to seamlessly integrate with both the Pronto TSU9400 and TSU9600.

The RFX9400 is a compact wireless extender that has four individually addressable IR outputs. It also features an Ethernet connection for wired network use. This compact unit is designed to operate straight out of the box with its integrated WiFi connection.



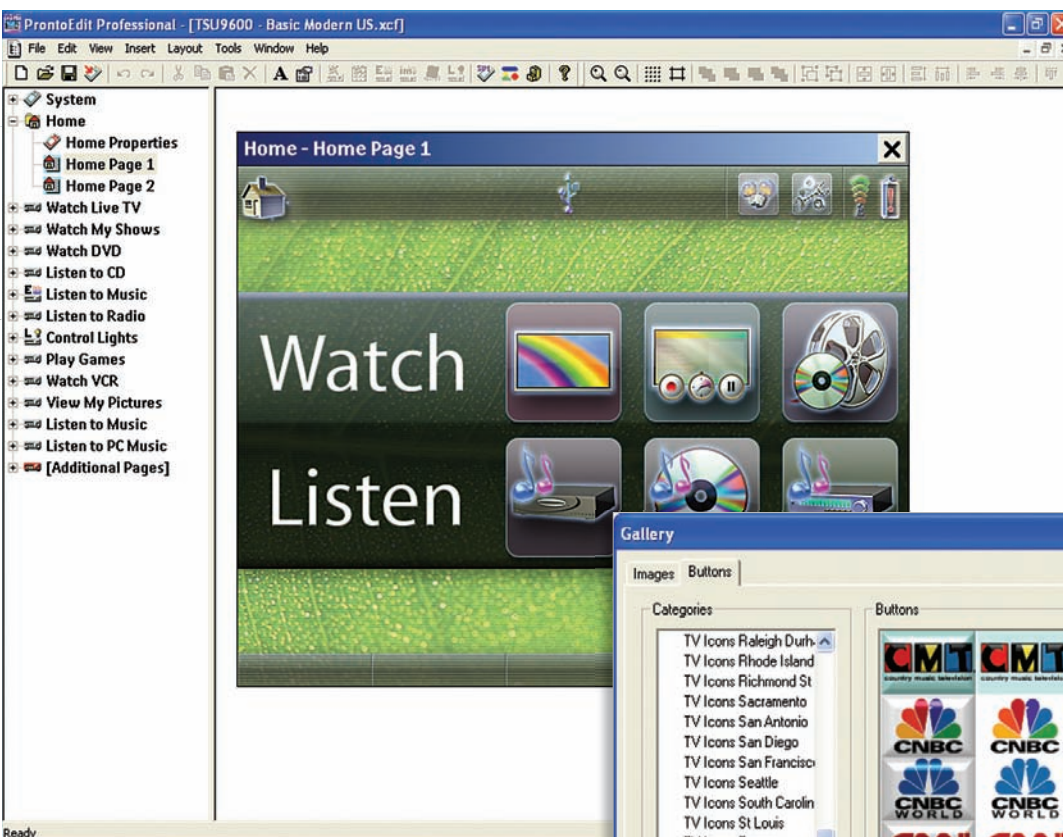
RFX9600

The more advanced rack-mountable serial extender, the RFX9600 offers substantially more wired functionality. In addition to its four IR ports, the RFX9600 has four RS232 serial ports for ultra-reliable wired control and four relay outputs for controlling mechanical equipment such as curtains, raising or lowering

projector screens, and so on. This unit also features 'power sensing', for controlling 'conditional' functions that toggle on or off using the same control code. It also includes an Ethernet port for network integration.

Up to 16 Pronto devices can be incorporated in one system.

Speedy wizard-based Pronto Editor



The beauty of the entire programmable Pronto range is that it truly allows you to design and install a total home control system with a 'one-of-a-kind' dynamic user interface.



The programming software that compliments the Pronto range, ProntoEdit Professional, features a number of improvements. Top of the list is the exclusive ProntoScript programming functionality that enables two-way real-time interaction and the creation of a dynamic user interface. In addition, the latest Pronto editor features improved wizard-based programming efficiency and overall operational reliability.

Other highlights include embedded software modules, enabling out-of-the-box control for Escient FireBall servers, the Imerge SoundServer S3000 and other XiVA supported music servers as well as Lutron RadioRa lighting systems.

For end-users who would like to integrate a computer, both the Pronto TSU9600 and TSU9400 can access digital files from any Windows MCE (Media Center Edition) computer. Microsoft Vista is also supported. The installer only needs to obtain the dedicated 3rd party PC software via the Pronto website.



Designed by installers, embraced

In order to truly customize the Pronto control solution to the end-user's wishes, installers and programmers can integrate 2-way feedback using the pioneering ProntoScript feature. ProntoScript, a JavaScript-based tool, is embedded in the ProntoEdit Professional software. It enables installers to create a dynamic 2-way user interface for system control over RS232 or IP with full graphical flexibility.

ProntoScript modules are available on the Pronto website for key players in the areas of lighting, HVAC (Heating, Ventilation and Air Conditioning), A/V servers and components, and BUS systems. Certified installers and programmers will be able to access a dedicated website (<http://www.prontoscript.com>) to download a variety of ProntoScript modules designed for other Pronto partner products. For typical installations, you may opt to use standard installation reference files and simply re-assign the various components. More advanced JavaScript programmers will be able to create their own ProntoScript modules for complete system operation and feedback.

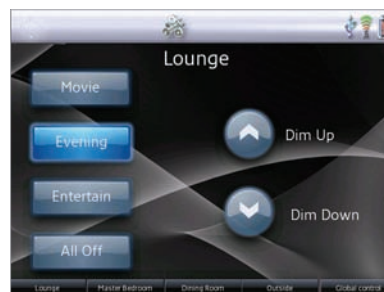


made by Philips, by partners



Lighting

Lighting modules provide a full on-screen Pronto partner user interface for controlling lighting scenes, moods and individual dimmers. With on-screen feedback for lighting throughout the house, the end-user knows if the light is actually on or off.



HVAC

The integration of HVAC modules in the Pronto panel enables reliable wireless climate control. You can monitor temperature and air flow creating a comfortable living environment in any room of the house.



A/V servers

Pre-defined ProntoScript modules for A/V servers facilitate listening to music without being in the sight line of a television. Full playlist and now playing status is shown on the Pronto's screen instead of on the television.



A/V components

ProntoScript modules also enable the user to view the active status as shown on the A/V device's display directly on the Pronto touch screen. So from no matter which room in the home, users will be able to see items like the volume level or tuner presets.





DISTRIBUTOR LOGO & WEBSITE



©2007 Koninklijke Philips Electronics N.V.

All rights reserved. Reproduction in whole or in part is prohibited without the prior written consent of the copyright owner. The information presented in this document does not form part of any quotation or contract, is believed to be accurate and reliable and may be changed without notice. No liability will be accepted by the publisher for any consequence of its use. Publication thereof does not convey nor imply any license under patent- or other industrial or intellectual property rights.