



Designed by installers,
made by Philips



Designed by you for your customer

Everything an end-user could wish for...

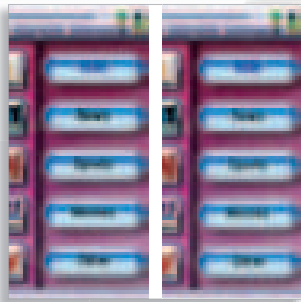
The original Philips Pronto single-handedly created a new class of programmable touchscreen remote controls for intuitive operation.

Today, the concept has evolved into an integrated control solution for conventional home theater, multimedia content and lighting. With a combination of infrared control* and WiFi® wireless control, Pronto provides true multi-room control.

* (via optional extenders)

...and everything
you asked for

When designing the latest Pronto, we went to custom installers to gain a better insight into their needs, and those of custom install owners. The result is a stylish unit that not only provides the end-user with intuitive fingertip home control, but also saves the installer valuable time by increasing programming efficiency and operational reliability.



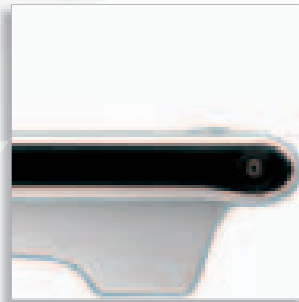
VGA resolution versus 'quarter' VGA



The perfectly flush top surface is elegant, practical and unique



Ergonomic thumbwheel



Sleek profile that looks great. Fits comfortably in your hand

Stunning design

Sensational design and a breathtaking color display give the new Pronto instant appeal. The smooth top and flush display is backed by an ergonomic 'soft feel' grip with a stylish metallic finish. Its docking station/recharger emits a subtle white glow and when charging a red indicator reflects on the tabletop.

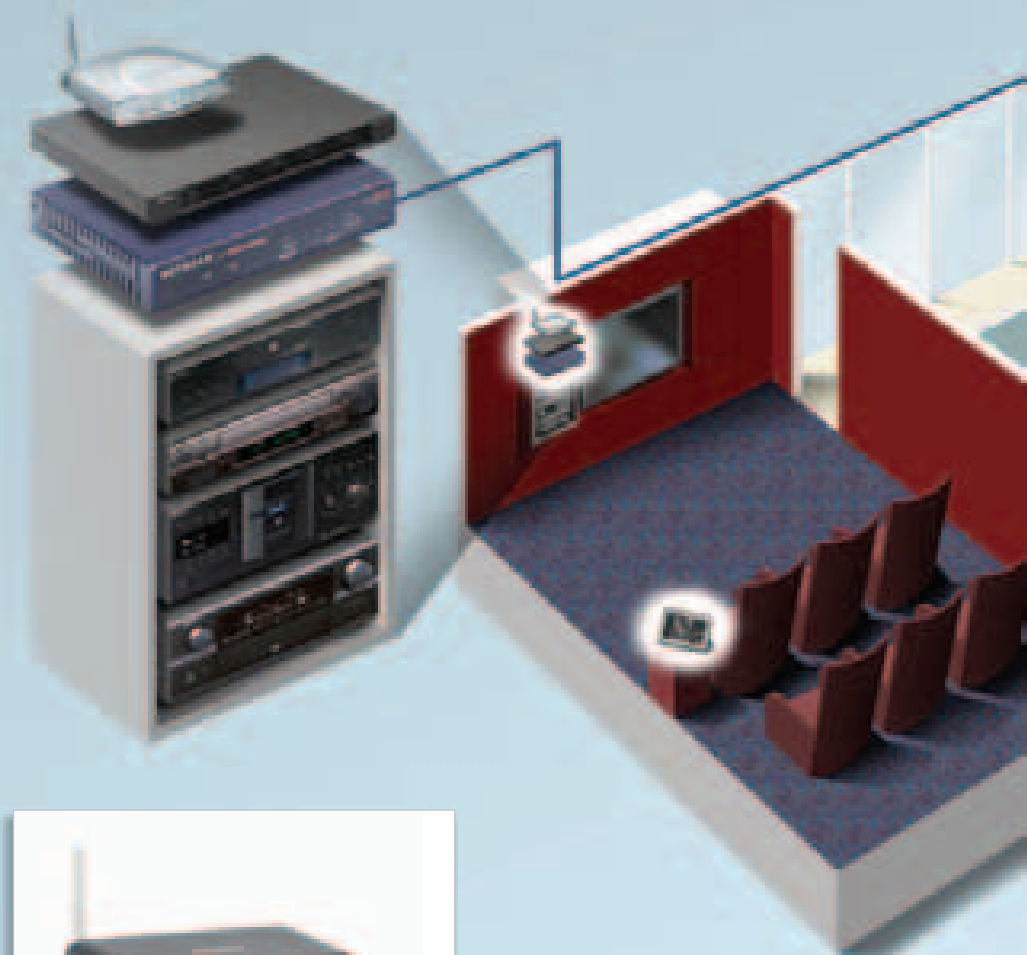
Incredibly sharp display

The 3.7-inch touchscreen has an amazing 640 x 480 (full VGA) display, giving it a higher pixel density than any current touchscreen home control unit. This shows icons, images and text with unbelievable clarity and definition. It also has an exceptionally wide viewing angle, combining comfort, convenience and style. The display has a virtually unbreakable protective screen cover that eliminates a potential cause of failure in touchscreen devices.

The Perfect Partner

Thanks to its best-in-class WiFi® wireless link, Pronto is ultra-reliable for complete multi-room home control. This proven RF technology, together with the unique Pronto protocol, ensure that codes and precision macro timings are precisely executed. This means they arrive at equipment anywhere in the house exactly as they should. For multi-room custom installs, Pronto is designed to work seamlessly with its dedicated wireless extender and serial extender, expanding the possibilities for end-users without a lot of additional wiring.

pronto



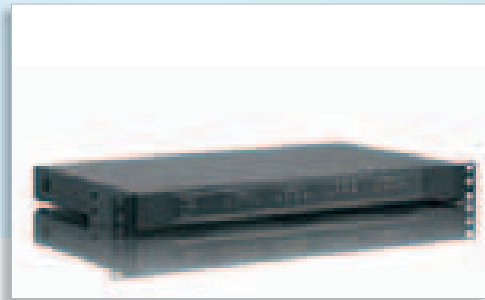
Wireless extender

The wireless extender combines ultra-reliable WiFi RF technology with a unique Pronto protocol on top of the link to ensure that codes and precision macro timings are perfectly preserved during transmission. It is a compact unit with four individually addressable IR outputs that make it possible to control multiple versions of the same piece of equipment (useful, for example, in a multi-room set-up with several identical set-top boxes). The extender works straight out of the box, simplifying the integration of Pronto into a home network. Up to 16 extenders can be incorporated in one system.

for System Integrations



As a true multi-room control solution, Pronto works seamlessly with its ultra-reliable wireless and serial extenders to manage entertainment equipment, content and lighting throughout the home

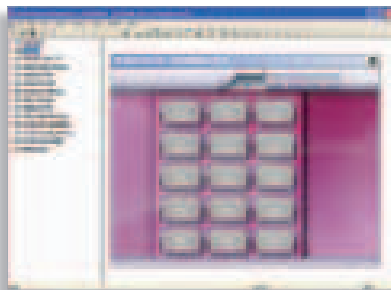


Serial extender

The advanced serial extender offers more functionality and comes in a standard 19-inch rack mountable enclosure. In addition to four individually addressable IR ports, it also has four RS232 ports for ultra-reliable hard-wired control. Four relay outputs are provided for controlling external equipment such as curtains, cabinet doors, and raising or lowering projection screens. This serial extender also features 'power sensing', for controlling 'conditional' functions that toggle on or off using the same control code.

ProntoEdit Professional

6 steps in 30 minutes



Pronto is easier to program thanks to a significantly improved PC editor, ProntoEdit Professional. It's packed with timesaving features yet still has a familiar look and feel, so you can get straight to work. Being activity-based rather than component-based, the software makes it easier for users to navigate the simplified menu structures. A new MyDatabase feature also allows you to separately store and manage the codes of the equipment you most frequently use for a custom install (a real time saver as it eliminates repetitive work!). Configuring Pronto has been brought down to just six steps* – taking just 30 minutes to complete. Built-in system diagnostics save time if a problem occurs. Other enhancements include WAV file compatibility and Russian and Hebrew font support. Sample the amazing PC Editor for yourself on-line via www.pronto.philips.com/downloads

* The 6 steps: 1. Delete unused activities - 2. Adjust home page - 3. Adjust layout pages - 4. Adjust codes - 5. Configure extenders - 6. Set the control panel



Channel Wizard

One of several wizards built into ProntoEdit Professional, the Channel Wizard reduces time creating an extremely reliable channel macro in just a few mouse clicks.

Simply enter the channel button, brand, device type and model number, and then specify the delay, to create an instant channel macro. Channel icons are easily changed using images from the gallery.



Extended Code Coverage

Pronto also has a larger IR code database than ever before, and this is based on model/type numbers rather than brand names or code searching, speeding up programming. The new database is easily updateable, and the unit's IR code learning capability now offers an unprecedented 99.99% coverage. This learning function utilizes the PC Editor software to manage 'learned' codes, and features a wizard that assists in learning complete OEM code sets, faster than ever before with the Fast Learn feature.



Much more than home entertainment control

Built-in User Interfaces

Based on end-user and installer input and experience, we have developed an intuitive and 're-usable' activity-based user interface. To help you create the perfect 'custom' user interfaces, multiple default user interfaces are available via the editor. These cover single zone and multi-room installations and operations, both for USA and Europe. Simply replace the components in the default configuration file with the specific installed components to allow activity-based system control and operation. To make the user interface even more intuitive, each activity has been color-coded and can therefore be easily recognized when operating the system.



Media Server



The Escient Fireball media server is controlled via a dedicated user interface on the Pronto display. It facilitates listening to music without being in view of a television, which is normally required to display the Fireball's user interface. This, in combination with an ergonomic thumb wheel on the unit, not only simplifies selecting tracks and playlists, but also frees up the TV screen for other entertainment. Album art images and other information are displayed on the Pronto's screen.



Lighting Control



The Lutron RadioRa compatibility means you get a full on-screen Pronto user interface for controlling lighting scenes, moods and individual dimmers. With on-screen feedback from lighting throughout the house, the end user knows if the light is actually on or off. The mood settings enable the complete room setting to be illuminated according to the desired mood at the touch of a single button – individual dimmers and switches do not need to be controlled.

