

marantz®

Model RC9001 User Guide

Touch Screen Remote Control

ENGLISH

FRANÇAIS

ESPAÑOL

**Wizz.Ex**

EN**WARNINGS**

- *Do not expose the equipment to rain or moisture.*
- *Do not remove the cover from the equipment.*
- *No naked flame sources, such as lighted candles, should be placed on the equipment.*
- *When disposing of used batteries, please comply with governmental regulations or environmental public instruction's rules that apply in your country or area.*
- *No objects filled with liquids, such as vases, shall be placed on the equipment.*

FR**AVERTISSEMENTS**

- *Ne pas exposer l'appareil à la pluie ni à l'humidité.*
- *Ne pas essayer de retirer le boîtier de l'appareil.*
- *Ne placer aucune source de flamme nue, comme une bougie allumée, sur l'appareil.*
- *Pour mettre au rebut les piles usées, respecter les lois gouvernementales ou les règlements officiels concernant l'environnement qui s'appliquent à votre pays ou région.*
- *Aucun objet rempli de liquide, un vase par exemple, ne doit être placé sur l'appareil.*

ES**ADVERTENCIAS**

- *No exponga el equipo a la lluvia ni a la humedad.*
- *No extraiga la tapa del equipo.*
- *No deben colocarse sobre el equipo elementos con fuego, por ejemplo velas encendidas.*
- *Cuando se eliminen baterías usadas, deben cumplirse las reglamentaciones oficiales o las normas de protección medioambiental aplicables en su país o en su zona.*
- *No se deben colocar sobre el aparato recipientes que contengan líquidos, como por ejemplo jarrones.*

Concept and realisation of the Guide:

Concepto y realización de la Guía:

Concept et réalisation du guide :

Human Interface Group, De Regenboog 11, 2800 Mechelen (Belgium)

www.higroup.com

Installing and Configuring

ENGLISH

Installation et configuration

FRANÇAIS

Instalación y configuración

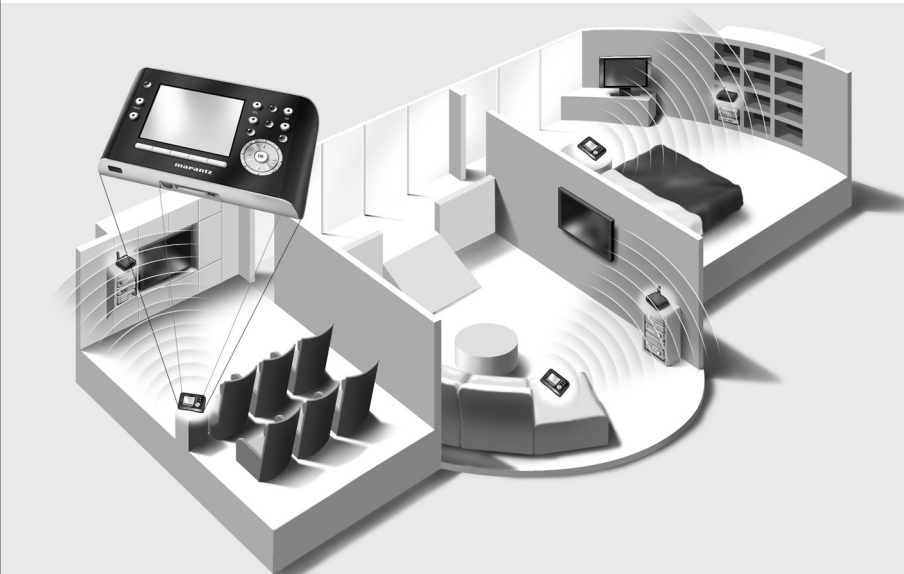
ESPAÑOL

Contents

Before You Start	1
Unpacking the Wizz.Ex RC9001 Control Panel.....	3
Preparing for Configuration	5
Charging the Control Panel.....	5
Installing Wizz.it Ex	5
Configuring the Wizz.Ex RC9001 Control Panel	5
Customizing the Configuration File.....	5
Downloading the Configuration File to the Control Panel	9
Support.....	9
Replacing the Batteries.....	9
Troubleshooting.....	9
FAQ Information and Latest Updates	11
Specifications.....	12
IFU Approbation / Safety Content.....	i
FCC Compliancy	i
Regulations According to R&TTE	i

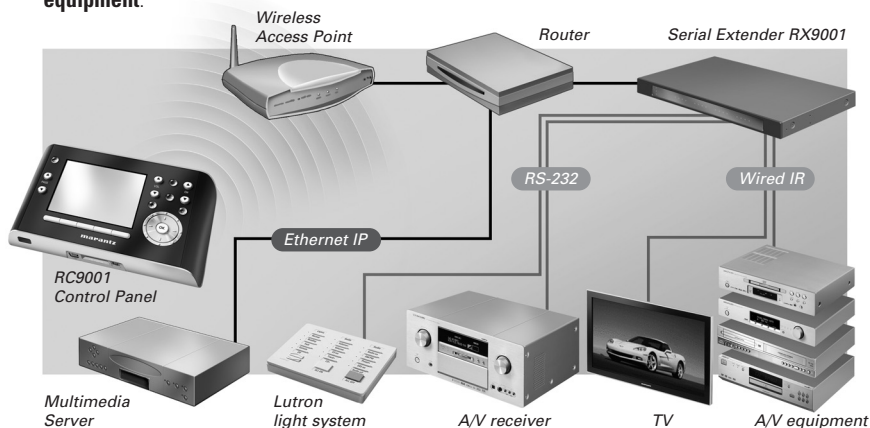
Before You Start

Based on a long experience and successful business in the custom installation market, the Marantz **Wizz.Ex** RC9001 is the **third generation of Home Theater Control Panels**. It includes all technology and features that are needed to operate any Home Theater in an easy and intuitive way. The system is IP-based and can work wirelessly with the RX8001/RX9001 extenders. With Wizz.it Ex you can create any graphical configuration.



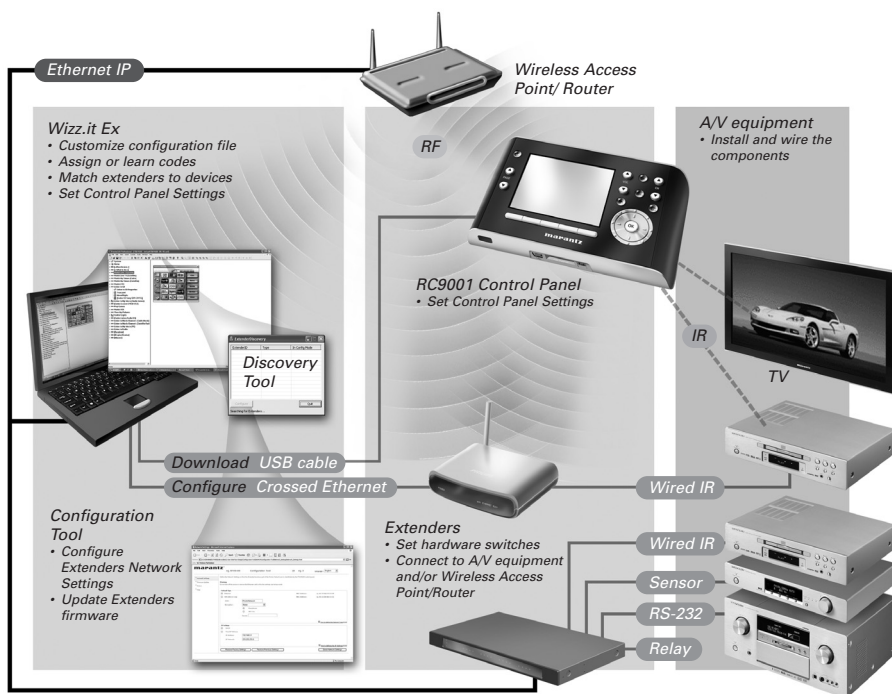
The *wizzEx* RC9001 System

The *wizzEx* RC9001 System contains a variety of equipment that is connected and configured to interact with each other. The scheme below shows a **possible connection with several A/V equipment**.



Configuration of the *wizzEx* RC9001 Control Panel

To set up a *wizzEx* RC9001 System and configure the Control Panel as the central unit of the system, you need different tools. The scheme below indicates the **different tools**, their **significance in the configuration** of the *wizzEx* RC9001 System and their **mutual connection**.

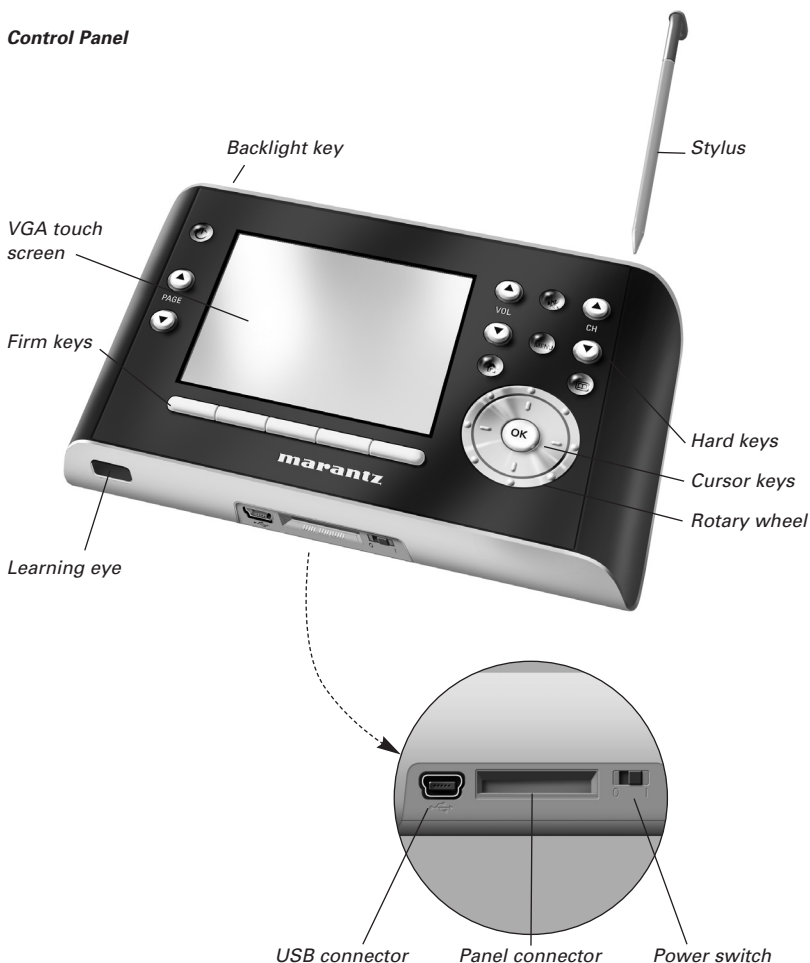


More information is available:

- In the **Wizz.it Ex Online Help** of Wizz.it Ex:
 - On how to customize a configuration file;
 - On how to incorporate Extenders in the configuration file;
- In the **User Guides** for the RX8001 and RX9001 Extenders:
 - On how to configure and install an Extender in the **WizzEx** RC9001 System.

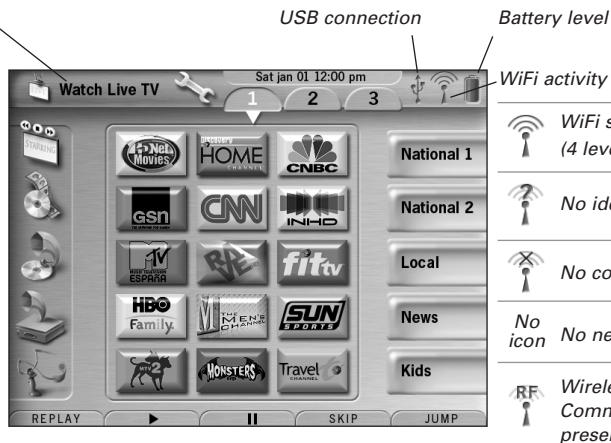
Unpacking the **WizzEx** RC9001 Control Panel

Control Panel

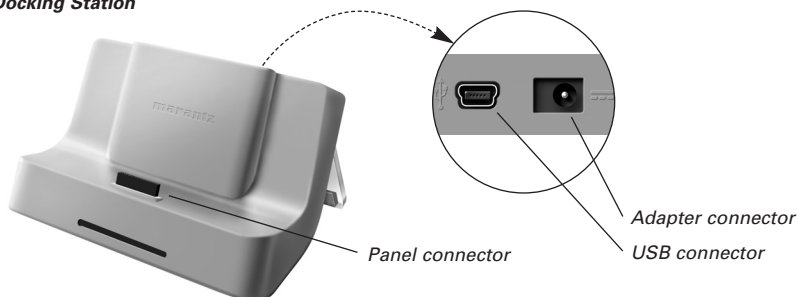


Touch Screen

Activity name
Is the label
you give to
the device in
the editor.



	WiFi strength (4 levels)
	No identification
	No connection
	No network
	Wireless Communication present

Docking Station**Power Adapter****USB Cable****CD with the following content**

- Wizz.it Ex
- Default configuration file
- Image galleries
- Acrobat Reader
- User Guides in various languages (PDF)
 - **WizzEx** RC9001 Control Panel
 - RX8001 Wireless Extender
 - RX9001 Serial Extender

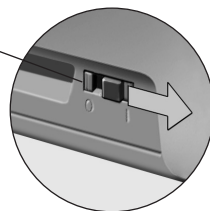
Preparing for Configuration

Charging the Control Panel

It is advised to charge the Control Panel to its maximum before you start configuring it. This can take up to 3 or 4 hours.

- 1 Activate the Control Panel by switching the **Power** switch at the bottom of the Control Panel to '1'.

- 2 Place the Control Panel in the docking station.
A **blue Charging LED** on the front of the docking station lights up while the Control Panel is charging.



Installing Wizz.it Ex

In the box you find a CD with which you install Wizz.it Ex. You can also check for updates on <http://www.marantz.com> in the **Home Entertainment** section of your region.

Insert the CD in the PC and follow the on screen instructions to install the editor.

Notes You can **install Wizz.it Ex** together with other Marantz editors. The files of Wizz.it Ex are automatically placed in a separate directory.

*If you want to **update Wizz.it Ex** and you have inserted personal images in the Gallery, you can make a back up of the gallery. You will be noted to do so in the installation wizard.*

Configuring the RC9001 Control Panel

Customizing the Configuration File

During the installation of the editor, **several configuration files** were also saved on your PC.

There is one default configuration file which you can start from to create a custom configuration file (defaultRC9001.xcf).

The default CF is constructed in such a way that they can be easily adjusted to the needs of every customer.

- The file contains the **12 most used activities** and its related A/V component.
- It is a **ready to use concept**. The configuration file contains different **activity macros**, which comprise a sequence of actions to start an activity.
- All **links and jumps** are already installed.

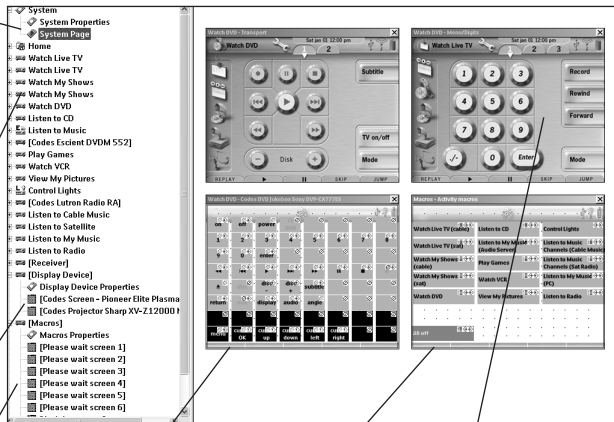
Example of default configuration file

Elements to define the overall **System Page** with the system items and the **Home Page**. Information on how to use the configuration file.

12 activities for controlling the A/V equipment in the Home Theater. Each activity contains several layout pages and a code page.

Devices that are used in different activities.

All macros, info screens, ... and other additional information are grouped together.



Code pages are hidden pages with buttons, which contain the codes for the device. Buttons on the layout pages and macros in the Macros page link to these buttons/codes.

The **Macros page** is a hidden page with the activity macros.

Layout pages are pages with all the graphics, as they will appear on the screen of the Control Panel.

Tip Before customizing the default configuration file, copy the file and give it a **specific name** e.g. Williams Home Theater.xcf.

Make sure you have the **model numbers** of the **A/V components** you want to control with the Control Panel at hand.

To customize the configuration file:

1 Delete the activities that the customer does not use or add new activities.

You delete the unused activities in the tree view of the editor. By deleting the activity all links to the buttons of this activity become inactive.

To add a new activity:

- Duplicate an existing activity and adjust the different pages.
- Add a new activity macro to the macros page.

Note The activities 'Watch Live TV', 'Watch Recorded TV' and 'Listen to Music Channels' are set up for **two input components: Cable and Satellite**. You have to choose one of the input components and remove the other one.

To remove the unused input component:

- Delete the **activity** with the unused component in the **tree view**.
 - Delete the corresponding **activity macro** on the **Activity Macros** page.
-

2 Adjust the Home Page.

Also delete the unused activities and add the new activities on the Home page.

3 Adjust the layout pages of the different activities.

Delete or add buttons to create a personal layout for every customer individually.


Tip The default configuration files contain **Favorites pages**, where you can group the favorite TV and radio channels of your customer in categories. Position the logo on the placeholder and assign the correct channel macros via the **Channel Macro Wizard**.

4 Adjust the codes on the code pages.

Before you adjust the codes in the configuration file, you add the codes of the specific A/V component of the customer in **My Database**.

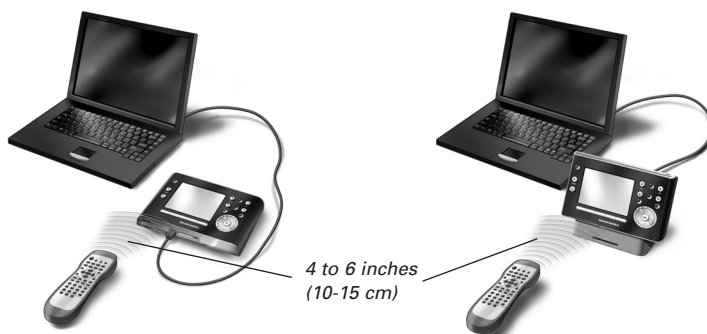
Read more about the use of My Database in the **Wizz.it Ex Online Help**.

To add codes to My Database:

- In **Factory Database**, search the device, based on its model number and add it to **My Database** via the button .

-Or-

- In **My Database**, learn the codes from the original remote control of the A/V component.



- 1 Connect the Control Panel (or the docking station) to the PC with the **USB cable**.
- 2 Place the original remote **4 to 6 inches (10-15 cm)** from the Control Panel in line with its learning eye.
Check if both the batteries are sufficiently charged.
- 3 Press and hold the key of the original remote for more than 1 second.

Tip *With the Control Panel connected to the PC, you can test newly added codes via the editor. You press the **Test IR** button and the code will be sent to the A/V equipment.*

To **assign codes** to the buttons in the code pages:

- 1 In the **Tools** menu, select **My Database Quick Access**.
- 2 Select the **code from the list**, drag-and-drop the code to the **button**.

5 **Configure the Extenders used in the *Wizz.Ex* RC9001 System.**

Tip *When you are not using an Extender in the configuration file, you need to disable the **Wireless Settings** in the **System Properties**.*

- 1 Select the number of Extenders in the **System Properties** on the tab **Extenders** and define the type.
- 2 Select the way the Control Panel will work together with the Extenders in the **System Properties** on the tab **Wireless Settings** (Stand-Alone or Network) and insert the requested settings.


Note *The **WiFi time out** can be set from 15 minutes to 24 hours, depending on the preference of the customer to optimize battery saving and response time when a button is pressed.*

- 3 Match each Extender to the device(s) by selecting the Extender in the **Device Properties** on the **Settings** tab.


Note *When the Extenders are used in a network, you need to configure the extenders with the **Extender Configuration Tool**. For more information, please refer to the User Guides for the RX8001 and RX9001 Extenders.*


6 **Configure the Settings for the Control Panel.**

Set time & date and define the activation method, time outs and screen brightness in the **System Properties** of the configuration file on the **Control Panel Settings** tab.

Note *On the Control Panel, you can still change a limited set of settings. To access the Settings on the Control Panel, press and hold the **Settings** icon  on the touch screen for 3 seconds.*

Downloading the Configuration File to the Control Panel

To download the configuration file to the Control Panel, connect it to your PC with the USB cable enclosed and click the icon  in Wizz.it Ex.

When you connect the Control Panel to the PC, it will be recognized by the PC as a removable disk and added in the folder list of your Windows Explorer as **Wizz.Ex** 'RC9001'. In the right corner of your Windows taskbar, the following icon  appears.



If the Control Panel is not recognized, try the following options:

- Unplug the Control Panel and try again a few seconds later.
- Unplug the Control Panel, reset it and try again.
- Check the USB settings on the PC.

Note *The Control Panel uses default Windows drivers for recognition. If the problem is not solved with the options described above, try installing the latest Service Pack for your Windows version or check the troubleshooting section of your operating system.*

Warnings *Do not pull the USB cable out of the PC during transition of the configuration file. Messages regarding downloading appear in Wizz.it Ex.*

Support

Replacing the Batteries

The batteries in the Control Panel are Lithium Polymer batteries. It is advised to change the batteries when the operation of the Control Panel becomes unreliable.

If you want to order new batteries, please contact your Marantz authorized dealer or Marantz customer service.

Warning *Replace the batteries only with original Marantz RC9001 batteries; otherwise the guarantee is no longer valid and hazardous situations could occur.*

Troubleshooting

Macros do not work

- Make sure you have defined the correct codes for your A/V equipment.
- Insert sufficient delays in the macros to allow the equipment to start up properly.
- Check for links to inactive buttons (i. e. buttons that do not contain a code nor link) in your macro. Delete these buttons or create a link to the code on the code page.
- Verify that the button has not been reprogrammed. Ensure that the Action List contains the appropriate commands for the A/V equipment.

RC9001 will not learn codes

- Make sure the Control Panel and the original remote control are positioned correctly.
- Do not learn codes under bright fluorescent light or sunlight, as intensive light sources affect the ability to learn codes successfully.
- Make sure the batteries of the Control Panel and the original remote are sufficiently charged.
- Press and hold the key on the original remote for more than one second.

The A/V equipment does not respond to commands from the Control Panel

- Make sure you have defined the correct codes for your A/V equipment.
- If you want to use RF signals for the equipment on different locations, you need to use multiple Extenders in the Wireless Network. You need to configure the Extenders:
 - On the Extender hardware by assigning an ID with the **Extender ID switch**.
 - In **Wizz.it Ex** by defining the number of Extenders in the **System Properties** and matching the Extender to the A/V component in the **Device Properties**.
 - When the Extenders work in a network, you need to configure the Network Settings in the **Configuration Tool**.

For more information, check the User Guides for the RX9001 and RX8001 Extenders and the Wizz.it Ex Online Help.

- When the Control Panel works in a WiFi environment, bear in mind that it may take the Wireless Network a few seconds to wake up and starts transmitting codes.
- Not all Wireless Access Points are working equally well in combination with the Control Panel. Make sure you use a quality access point.

The transmission of the signals over the wireless network is slow

Depending on the Settings you made for the Network Settings, it takes longer for the Wireless Network to transmit signals. The variables in the Settings are:



- **The location of the Wireless Access Point:** To test if the Wireless Access Point and the Control Panel are too far apart, take the Control Panel and stand closer to the Wireless Access Point.

If the transition is significantly faster, place the Wireless Access Point closer to where the Control Panel will be used or add an extra Wireless Access Point in the Wireless Network.

- **Encryption:** The encryption used by the Extenders and the Control Panel slows the transition of the signal down.
- **The chipset of your Wireless Access Point.**
- **The DHCP server settings.**

Caution *If you change the DHCP Settings to accelerate the transition, you also need to adjust these settings on the Extenders used in the Wireless Network with the **Configuration Tool**.*

The Control Panel shows one of the following icons

	<p>No connection</p> <ul style="list-style-type: none">• The Wireless Access Point is powered down.• The Control Panel is out of range of the Wireless Access point.• There is an encryption problem.
	<p>No identification</p> <ul style="list-style-type: none">• There is no IP address received.• An IP conflict is detected.

The WiFi icon is not shown on the screen of the Control Panel

You cannot see the WiFi icon:

- When the extenders and the Control Panel are configured in Stand-Alone.
- When you disabled the system item WiFi Level in the Wizz.it Ex.

The Control Panel behaves erratically

Normally, resetting the Control Panel is not necessary. However, if the touch screen freezes or if you notice unusual behavior, you need to perform a reset to get it running again.


You reset the Control Panel by switching the Power switch to 0, waiting a few seconds and switching the Power switch back to 1.

FAQ Information and Latest Updates

You can find more information and latest updates on www.marantz.com.

Navigate to the **Support** section for more FAQ Information.

Navigate to the **Product>Downloads** section for the following updates:

-  RC9001 Control Panel Firmware;
Download this on the Control Panel when it does not start up or when the screen stays black after resetting.
- RX9001 and RX8001 Extender Firmware;
- Wizz.it Ex Software.

Note *Installing the latest update of the Wizz.it Ex software will overwrite all files and delete the personal images you added to the gallery. Make sure to **update the gallery** when requested in the wizard to **copy your personal images to the new gallery**.*

Specifications

Display	3.7" TFT color display with touch screen VGA (640 x 480 pixels) resolution landscape LCD 65,536 colors
Interface	USB 2.0 port connector
Infrared (IR)	Operating distance = max 36 ft (12 m) Learning distance = 3,9 – 5,9 inch (100-150 mm) at 0-40 degrees Operating angle= 45° at max 15 ft (5 m) Operating/ learning frequency range = 17 kHz – 1 MH carrier freq
Wireless System	WiFi based technology operating at 2.4 GHz
Memory	64 MB SDRAM 64 MB NAND Flash
Power Management	Power on by tilting, tapping the screen, pressing the backlight button or tapping the keys Power off automatically by time out Battery status indication
Dimensions	Control Panel: 6,6 x 3,9 x 1,3 inch (166,4 x 100 x 32 mm) Docking Station: 5,1 x 3,9 x 2,4 inch (130,5 x 98,7 x 61,3 mm)
Operating Temperature	41° F – 113° F (5° C – 45° C)
Storage temperature	-13° F – 158° F (-25° C – 70° C)
Battery	Lithium Polymer battery, 2100 mAh
Power Adapter	100 V-240 V AC / 50-60 Hz Power adapter (5 V DC/2A output)
Accessories	<ul style="list-style-type: none"> • USB cable • Power adapter • Docking station • CD-ROM with Wizz.it Ex, User Guides for the Control Panel and Extenders (PDF), Acrobat Reader • 1 User Guide, "Installing and Configuring" • Warranty certificate (For USA/Canada only)
Wizz.it Ex	Supported operating systems <ul style="list-style-type: none"> • Windows 2000 • Windows XP Minimum requirements: <ul style="list-style-type: none"> • 500 MHz Intel Pentium III workstation or equivalent • 256 MB physical memory • 250 MB of free disk space Recommended requirements: <ul style="list-style-type: none"> • 1.2 GHz Intel Pentium IV workstation or equivalent • 512 MB physical memory • 500 MB of free disk space
IR code database information	Designed with UEI Technology Licensed under U.S. Patent 5,689,353 Portions © UEI 1999

RC9001 User Guide

© Marantz Brand Company – A division of D&M Holdings Inc. D&M Building, 2 -1 Nisshin-CHO, Kawasaki-KU, Kawasaki-SHI, Kanagawa, 210-8569, Japan.

Remarks:

All rights are reserved. Reproduction in whole or in part is prohibited without prior consent of the copyright owner. Marantz Brand Company – A division of D&M Holdings Inc. is not liable for omissions or for technical or editorial errors in this manual or for damages directly or indirectly resulting from the use of the RC9001. The information in this User Guide may be subject to change without prior notice. All brand or product names are trademarks or registered trademarks of their respective companies or organizations.

FCC Compliancy

This device complies with Part 15 of the FCC Rules. Operation is subject to the following two conditions:

- This device may not cause harmful interference.
- This device must accept any interference received, including interference that may cause undesired operation.

This equipment has been tested and found to comply with the limits for a Class B digital device, pursuant to part 15 of the FCC rule.

These limits are designed to provide reasonable protection against harmful interference in residential installations. This equipment generates, uses, and can radiate radio frequency energy and, if not installed and used in accordance with the instructions, may cause harmful interference to radio communications.

However, there is no guarantee that interference will not occur in a particular installation. If the equipment does cause harmful interference to radio or television reception, which can be determined by turning the equipment off and on, the user is encouraged to try to correct the interference by one or more of the following measures:

- Reorient or relocate the receiving antenna.
- Increase the separation between the equipment and receiver.
- Connect the equipment into an outlet on a different circuit from the receiver.
- Consult the dealer or an experienced radio/TV technician for help.

CAUTION The user changes or modifications not expressly approved by the party responsible for compliance could void the user's authority to operate the equipment.

Notice for Canada / Remark pour le Canada

This class B digital apparatus complies with Canadian ICES-003.

Cet appareil numerique de la Classe B est conforme a la norme NMB-003 du Canada

Regulations According to R&TTE

Declaration

Hereby, Marantz Europe, a division of D&M Europe B.V. declares that this Control Panel RC9001 is in compliance with the essential requirements and other relevant provisions of Directive 1999/5/EC:

- Radio: EN 300 328
- EMC: ETSI EN 301 489-1, ETSI EN 301 489-17
- Safety: EN60950-1

Česky My, **Marantz Europe, a division of D&M Europe B.V.**, prohlašujeme že výrobek **RC9001** splňuje základní požadavky a ostatní příslušná ustanovení Směrnice 1999/5/EC.

Dansk **Marantz Europe, a division of D&M Europe B.V.**, erklærer herved, at følgende udstyr **RC9001** overholder de væsentlige krav og øvrige relevante krav i direktiv 1999/5/EF.

Deutsch Hiermit erklärt **Marantz Europe, a division of D&M Europe B.V.**, dass sich dieses Gerät (**RC9001**) in Übereinstimmung mit den grundlegenden Anforderungen und den anderen relevanten Vorschriften der Richtlinie 1999/5/EG befindet*. (BMW i).

Eesti keeles Käesolevaga kinnitab **Marantz Europe, a division of D&M Europe B.V.** et see **RC9001** vastab Euroopa Nõukogu direktiivi 1999/5/EC põhinõuetele ja muudele olulistele tingimustele.

Ελληνικά ΜΕ ΤΗΝ ΠΑΡΟΥΣΑ **Marantz Europe, a division of D&M Europe B.V.** ΔΗΛΩΝΕΙ ΟΤΙ **RC9001** ΣΥΜΜΟΡΦΩΝΕΤΑΙ ΠΡΟΣ ΤΙΣ ΟΥΣΙΩΔΕΙΣ ΑΠΑΙΤΗΣΕΙΣ ΚΑΙ ΤΙΣ ΛΟΙΠΕΣ ΣΧΕΤΙΚΕΣ ΔΙΑΤΑΞΕΙΣ ΤΗΣ ΟΔΗΓΙΑΣ 1999/5/ΕΚ.

Español Por medio de la presente **Marantz Europe, a division of D&M Europe B.V.** declara que **RC9001** cumple con los requisitos esenciales y cualesquiera otras disposiciones aplicables o exigibles de la Directiva 1999/5/CE.

Français	Par la présente Marantz Europe, a division of D&M Europe B.V. , déclare que les appareils du type RC9001 sont conformes aux exigences essentielles et aux autres dispositions pertinentes de la directive 1999/5/CE.
Italiano	Con la presente Marantz Europe, a division of D&M Europe B.V. , dichiara che questo RC9001 è conforme ai requisiti essenziali ed alle altre disposizioni pertinenti stabilite dalla direttiva 1999/5/CE.
Magyar	A gyártó Marantz Europe, a division of D&M Europe B.V. , kijelenti, hogy ez a RC9001 megfelel az 1999/5/EK irányelv alapkövetelményeinek és a kapcsolódó rendelkezéseknek.
Nederlands	Hierbij verklaart Marantz Europe, a division of D&M Europe B.V. , dat deze RC9001 in overeenstemming is met de essentiële eisen en de andere relevante bepalingen van richtlijn 1999/5/EG.
Polski	Niniejszym firma Marantz Europe, a division of D&M Europe B.V. , oświadcza, że RC9001 spełnia wszystkie istotne wymagania i klauzule zawarte w dokumencie „Directive 1999/5/EC”.
Português	Marantz Europe, a division of D&M Europe B.V. , declara que este RC9001 está conforme com os requisitos essenciais e outras disposições da Directiva 1999/5/CE.
Slovensky	Výrobca Marantz Europe, a division of D&M Europe B.V. týmto deklaruje, že táto RC9001 je v súlade so základnými požiadavkami a ďalšími relevantnými predpismi smernice 1999/5/EC.
Slovensko	Marantz Europe, a division of D&M Europe B.V. s tem potrjuje, da je ta RC9001 skladen/a z osnovnimi zahtevami in ustreznimi določili Direktive 1999/5/EC.
Suomi	Marantz Europe, a division of D&M Europe B.V. , vakuuttaa täten että RC9001 tyyppinen laite on direktiivin 1999/5/EY oleellisten vaatimusten ja sitä koskevien direktiivin muiden ehtojen mukainen.
Svenska	Härmed intygar, Marantz Europe, a division of D&M Europe B.V. , att denna RC9001 står i överensstämmelse med de väsentliga egenskapskrav och övriga relevanta bestämmelser som framgår av direktiv 1999/5/EG.

Declaration of Conformity(DoC)

Declaration of Conformity (DoC) of this product can be found at: <http://www.marantz.com/download/RC9001>.

Marking

In line with CE marking regulations: the CE mark and the class 2 identifier are added to the equipment:



This device can be used in the following countries:							
AT ✓	BE ✓	CH ✓	DE ✓	DK ✓	GR ✓	ES ✓	FI ✓
FR ✓	IRE ✓	IT ✓	LU ✓	NL ✓	PT ✓	SE ✓	UK ✓

Czech



Likvidace starého výrobku

Tento výrobek je navržen a vyroben z materiálů a komponentů nejvyšší kvality, které je možné recyklovat a opětovně použít. Pokud je výrobek označen tímto symbolem přeškrtnutého kontejneru, znamená to, že výrobek podléhá směrnici EU 2002/96/EC. Informujte se o místním systému sběru tříděného odpadu elektrických a elektronických výrobků. Postupujte podle místních pravidel a neodkládejte takové staré výrobky do běžného komunálního odpadu. Správná likvidace starého výrobku pomůže předcházet případným nepříznivým účinkům na životní prostředí a lidské zdraví.

Danish



Bortskaffelse af dit gamle produkt

Dit produkt er konstrueret med og produceret af materialer og komponenter af høj kvalitet, som kan genbruges. Når dette markerede affaldsbøttesymbol er placeret på et produkt betyder det, at produktet er omfattet af det europæiske direktiv 2002/96/EC. Hold dig orienteret om systemet for særskilt indsamling af elektriske og elektroniske produkter i dit lokalområde. Overhold gældende regler, og bortskaf ikke dine gamle produkter sammen med dit almindelige husholdningsaffald. Korrekt bortskaffelse af dine gamle produkter er med til at skåne miljøet og vores helbred.

Dutch



Verwijdering van uw oude product

Uw product is vervaardigd van kwalitatief hoogwaardige materialen en onderdelen, welke gerecycled en opnieuw gebruikt kunnen worden. Als u op uw product een doorstreepte afvalcontainer op wieltjes ziet, betekent dit dat het product valt onder de EU-richtlijn 2002/96/EC. Win inlichtingen in over de manier waarop elektrische en elektronische producten in uw regio gescheiden worden ingezameld. Neem bij de verwijdering van oude producten de lokale wetgeving in acht en plaats deze producten niet bij het gewone huishoudelijke afval. Als u oude producten correct verwijdert voorkomt u negatieve gevolgen voor het milieu en de volksgezondheid.

Finnish



Vanhan tuotteen hävittäminen

Tuotteesi on suunniteltu ja valmistettu laadukkaista materiaaleista ja komponenteista, jotka voidaan kierrättää ja käyttää uudelleen. Tuotteeseen kiinnitetty ylivivatus roskakorin kuva tarkoittaa, että tuote kuuluu Euroopan parlamentin ja neuvoston direktiivin 2002/96/EC soveltamisalaan. Ota selvää sähkölaitteille ja elektronisille laitteille tarkoitusta kierrätysjärjestelmästä alueellasi. Noudata paikallisia sääntöjä äläkä hävitä vanhoja tuotteita tavallisen talousjätteen mukana. Vanhojen tuotteiden hävittäminen oikealla tavalla auttaa vähentämään ympäristölle ja ihmisille mahdollisesti koituvia haittavaikutuksia

French



Mise au rebut des produits en fin de vie

Ce produit a été conçu et fabriqué avec des matériaux et composants recyclables de haute qualité. Le symbole d'une poubelle barrée apposé sur un produit signifie que ce dernier répond aux exigences de la directive européenne 2002/96/EC. Informez-vous auprès des instances locales sur le système de collecte des produits électriques et électroniques en fin de vie. Conformez-vous à la législation en vigueur et ne jetez pas vos produits avec les déchets ménagers. Seule une mise au rebut adéquate des produits peut empêcher la contamination de l'environnement et ses effets nocifs sur la santé.

German



Entsorgung Ihres alten Geräts

Ihr Gerät wurde unter Verwendung hochwertiger Materialien und Komponenten entwickelt und hergestellt, die recycelt und wieder verwendet werden können. Befindet sich dieses Symbol (durchgestrichene Abfalltonne auf Rädern) auf dem Gerät, bedeutet dies, dass für dieses Gerät die Europäischen Richtlinie 2002/96/EG gilt. Informieren Sie sich über die geltenden Bestimmungen zur getrennten Sammlung von Elektro- und Elektronik-Altgeräten in Ihrem Land. Richten Sie sich bitte nach den geltenden Bestimmungen in Ihrem Land, und entsorgen Sie Altgeräte nicht über Ihren Haushaltsabfall. Durch die korrekte Entsorgung Ihrer Altgeräte werden Umwelt und Menschen vor möglichen negativen Folgen geschützt.

Greek



Απορριψη παλιού προϊόντος

Το προϊόν αυτό έχει σχεδιαστεί και κατασκευαστεί με υψηλής ποιότητας υλικά και εξαρτήματα που μπορούν να ανακυκλωθούν και να ξαναχρησιμοποιηθούν. Όταν ένα προϊόν φέρει την ένδειξη ενός διαγραμμένου κάδου με ρόδες, τότε το προϊόν αυτό καλύπτεται από την Οδηγία 2002/96/ΕΚ. Παρακαλούμε να ενημερωθείτε σχετικά με το τοπικό σύστημα ξεχωριστής συλλογής ηλεκτρικών και ηλεκτρονικών προϊόντων. Παρακαλούμε να ακολουθείτε την τοπική νομοθεσία και να μην απορρίπτετε τα παλιά σας προϊόντα μαζί με τα οικιακά σας απορρίμματα. Η σωστή μέθοδος απόρριψης των παλιών σας προϊόντων θα συμβάλει στην αποφυγή αρνητικών επιπτώσεων στο περιβάλλον και την ανθρώπινη υγεία.

Hungarian



Az elhasznált termék hulladékkezelése

Ezt a terméket minőség, újrafeldolgozható és újrahasznosítható anyagok és alkatrészek felhasználásával tervezték és készítették. A termékhez kapcsolódó áthúzott kerekes kuka szimbólum azt jelenti, hogy a termékre vonatkozik a 2002/96/EK. Európai irányelv. Kérjük, informálódjon az elektromos és elektronikus hulladékok szelektív gyűjtésének helyi rendszeréről. Kérjük, a helyi szabályok figyelembe vételével járjon el, és ne dobja az elhasznált terméket a háztartási hulladékgyűjtőbe. Az elhasznált termék megfelelő hulladékkezelése segítséget nyújt a környezettel és az emberi egészséggel kapcsolatos esetleges negatív következmények megelőzésében.

Italian



Smaltimento di vecchi prodotti

Il prodotto è stato progettato e assemblato con materiali e componenti di alta qualità che possono essere riciclati e riutilizzati. Se su un prodotto si trova il simbolo di un bidone con ruote, ricoperto da una X, vuol dire che il prodotto soddisfa i requisiti della Direttiva comunitaria 2002/96/CE. Informarsi sulle modalità di raccolta, dei prodotti elettrici ed elettronici, in vigore nella zona in cui si desidera disfarsi del prodotto. Attenersi alle normative locali per lo smaltimento dei rifiuti e non gettare i vecchi prodotti nei normali rifiuti domestici. Uno smaltimento adeguato dei prodotti aiuta a prevenire l'inquinamento ambientale e possibili danni alla salute.

Norwegian Avhending av gamle produkter

Produktet er utformet og produsert i materialer og komponenter av høy kvalitet, som kan resirkuleres og brukes på nytt. Når denne søppelbøtten med kryss på følger med et produkt, betyr det at produktet dekkes av det europeiske direktivet 2002/96/EU. Finn ut hvor du kan levere inn elektriske og elektroniske produkter til gjenvinning i ditt lokalmiljø. Overhold lokale regler, og ikke kast gamle produkter sammen med husholdningsavfallet. Riktig avhending av de gamle produktene dine vil hjelpe til med å forhindre potensielle negative konsekvenser for miljøet og menneskers helse.

Polish Usuwanie zużytych produktów

Niniejszy produkt został zaprojektowany i wykonany w oparciu o wysokiej jakości materiały i podzespoły, które poddane recyklingowi mogą być ponownie użyte. Jeśli na produkcie znajduje się symbol przekreślonego pojemnika na śmieci na kółkach, podlega on postanowieniom dyrektywy 2002/96/WE. Należy zapoznać się lokalnymi zasadami zbiórki i segregacji sprzętu elektrycznego i elektronicznego. Należy przestrzegać lokalnych przepisów i nie wyrzucać zużytych produktów elektronicznych wraz z normalnymi odpadami gospodarstwa domowego. Prawidłowe składowanie zużytych produktów pomaga ograniczyć ich szkodliwy wpływ na środowisko naturalne i zdrowie ludzi.

Portuguese Eliminação do seu antigo produto

O seu produto foi desenhado e fabricado com matérias-primas e componentes de alta qualidade, que podem ser reciclados e reutilizados. Quando este símbolo, com um latão traçado, está afixado a um produto significa que o produto é abrangido pela Directiva Europeia 2002/96/EC. Informe-se acerca do sistema de recolha selectiva local para produtos eléctricos e electrónicos. Aja de acordo com os regulamentos locais e não descarte os seus antigos produtos com o lixo doméstico comum. A correcta eliminação do seu antigo produto ajuda a evitar potenciais consequências negativas para o meio ambiente e para a saúde pública.

Slovak Likvidácia tohto produktu

Váš produkt bol navrhnutý a vyrobený pomocou vysokokvalitných materiálov a komponentov, ktoré sa dajú recyklovať a znova využiť. Keď sa na produkte nachádza symbol prečiarknutého koša s kolieskami, znamená to, že tento produkt pokrýva Európska smernica 2002/96/EC. Informujte sa o miestnom systéme separovaného zberu elektrických a elektronických výrobkov. Postupujte podľa miestnych pravidiel a nevyhadzujte tento produkt do bežného odpadu z domácnosti. Správnu likvidáciu starého produktu pomôže zabrániť možným negatívnym následkom na životné prostredie a ľudské zdravie.

Slovenian Odlaganje starega izdelka

Izdelek je zasnovan in izdelan iz visokokakovostnih materialov in komponent, ki jih je mogoče reciklirati in ponovno uporabiti. Če je izdelek označen s prečrtanim košem za smeti, to pomeni, da je v skladu z Direktivo EU 2002/96/ES. Seznajte se z lokalnim sistemom za zbiranje odpadnih električnih in elektronskih komponent. Upoštevajte lokalne predpise in izrabljenega izdelka ne odlagajte z običajnimi gospodinjskimi odpadki. S pravilnim odlaganjem izrabljenih izdelkov pomagajte preprečevati negativne posledice na okolje in zdravje ljudi.

Spanish Desecho del producto antiguo

El producto se ha diseñado y fabricado con materiales y componentes de alta calidad, que se pueden reciclar y volver a utilizar. Cuando este símbolo de contenedor de ruedas tachado se muestra en un producto indica que éste cumple la directiva europea 2002/96/EC. Obtenga información sobre la recogida selectiva local de productos eléctricos y electrónicos. Cumpla con la normativa local y no deseché los productos antiguos con los desechos domésticos. El desecho correcto del producto antiguo ayudará a evitar consecuencias negativas para el medioambiente y la salud humana.

Swedish Kassering av din gamla produkt

Produkten är utvecklad och tillverkad av högkvalitativa material och komponenter som kan både återvinnas och återanvändas. När den här symbolen med en överkryssad papperskorg visas på produkten innebär det att produkten omfattas av det europeiska direktivet 2002/96/EG. Ta reda på var du kan hitta närmaste återvinningsstation för elektriska och elektroniska produkter. Följ de lokala reglerna och släng inte dina gamla produkter i det vanliga hushållsavfallet. Genom att kassera dina gamla produkter på rätt sätt kan du bidra till att minska eventuella negativa effekter på miljö och hälsa.

Turkish Eski ürününüzün atılması

Ürününüz, geri dönüşüme tabi tutulabilen ve yeniden kullanılabilen, yüksek kalitede malzeme ve parçalarla tasarlanmıştır ve üretilmiştir. Bir ürüne, çarpi işaretli tekerlekli çöp arabası işaretli etiket yapıştırılması, söz konusu ürünün 2002/96/EC sayılı Avrupa Yönergesi kapsamına alınması anlamına gelir. Lütfen, elektrikli ve elektronik ürünlerin toplanması ile ilgili bulunduğunuz yerdeki sistem hakkında bilgi edinin. Lütfen, yerel kurallara uygun hareket edin ve eskiyen ürünlerinizi, normal evsel atıklarınızla birlikte atmayın. Eskiyen ürününüzün atık işlemlerinin doğru biçimde gerçekleştirilmesi, çevre ve insan sağlığı üzerinde olumsuz etkilere yol açılmasını önlemeye yardımcı olacaktır.

www.marantz.com

You can find your nearest authorized distributor or dealer on our website.

marantz® is a registered trademark.