

PHILIPS



Module C - Basic ProntoEdit Programming



Take-away

- Know how to do some basic adaptation to the default configuration file
- Know how to test and download your configuration file to the control panels.

Contents

- Learn the Basic Terminology
- Adapt the default configuration - Example
- References: the Toolbar + menu in detail

PHILIPS



Learn the Basic Terminology



Contents

- What is ProntoEdit Professional?
- Example default configuration file
- Pronto Emulator
- Download
- Function keys - shortcuts

Contents

- What is ProntoEdit Professional?
- Example default configuration file
- Pronto Emulator
- Download
- Function keys - shortcuts

What is ProntoEdit Professional?

- Free and flexible PC program to create your own user interface:
 - personalized backgrounds
 - buttons
 - labels
 - icons and actions



Contents

- What is ProntoEdit Professional?
- Example default configuration file
- Pronto Emulator
- Download
- Function keys - shortcuts

The TSU9600Demo.xcf

- Start the ProntoEdit Professional program on your Desktop.
- Select My Documents\
Pronto projects\TSU9600\
TSU9600Demo.xcf.
- See the complete tree view.



The TSU9600Demo.xcf

System configuration:

Settings of the system properties.
Defining of the system page.



Level 1: Home

Settings of the Home page properties.
Defining of the Home page.



Level 2: Device/activity

Defining of the devices for different activities.

Level 3: Page

Defining of the actions on the pages.



Building blocks of a configuration

- Device
- Page
- Panel
- Button
- Actions of a button

Device

- Each device can be a “real device” e.g. TV,DVD or a hidden device e.g. to make Macros.
- On each device you have the device properties, pages and the (hidden) code pages.

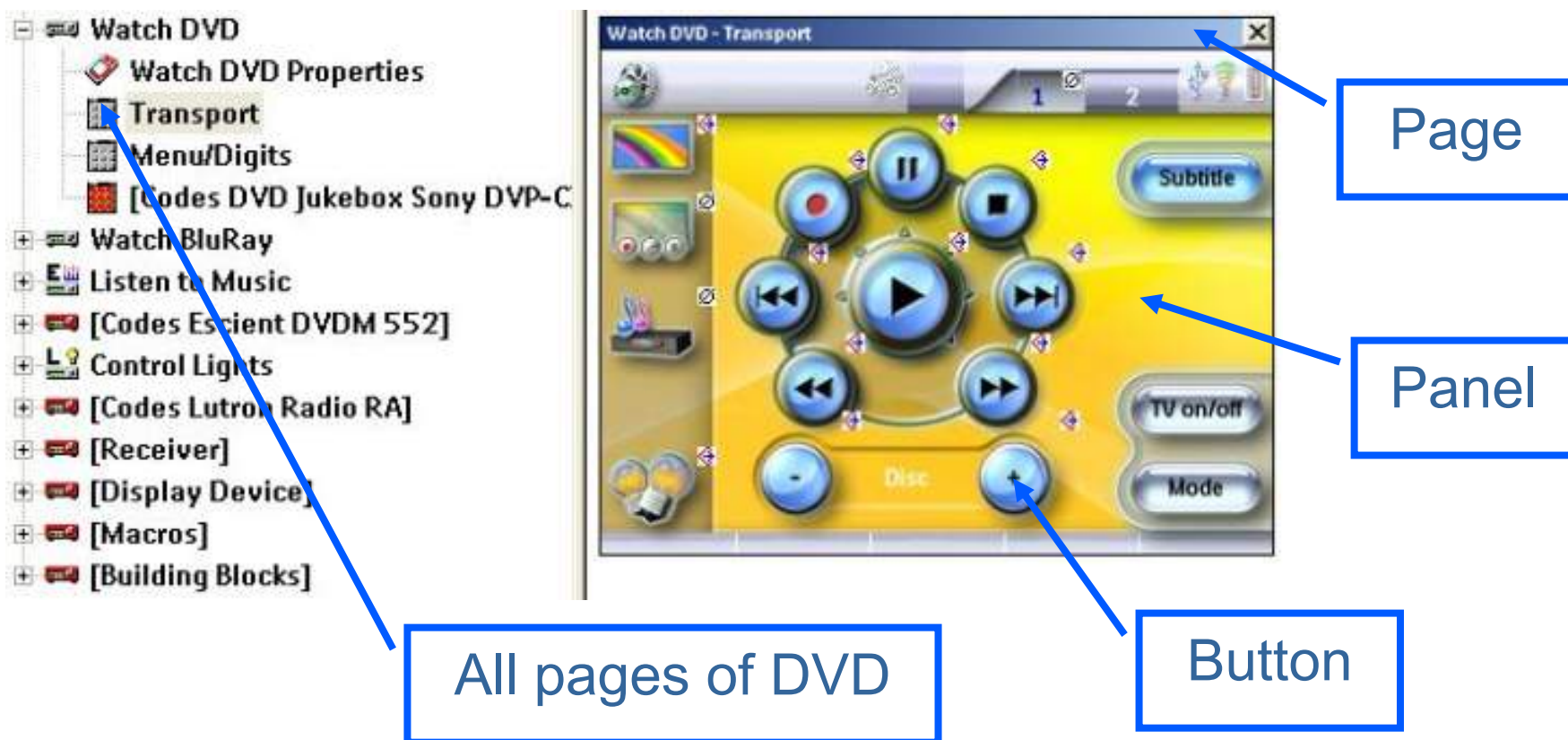


Hidden
device

Real
device

Page

- A page is a part of a device, where you can add buttons and panels to it



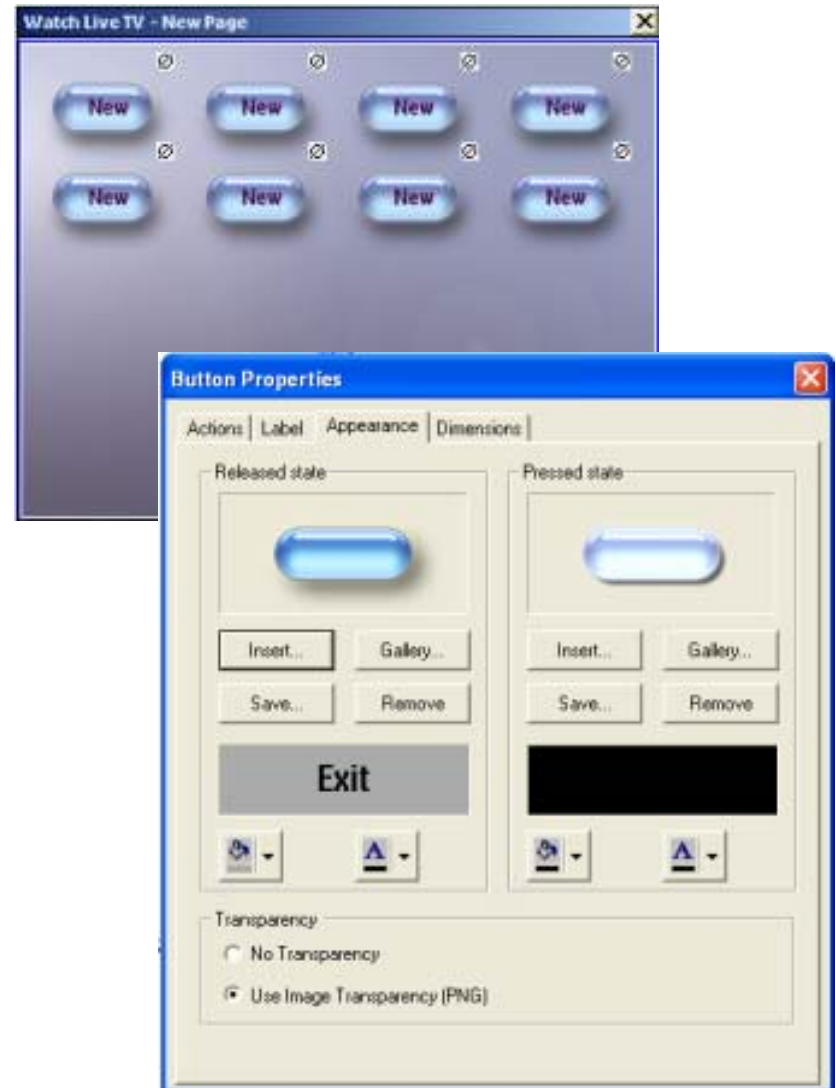
Panel

- Usage:
 - To add labels
 - To create backgrounds
- Inactive element = can not be pressed, contains no action
- Properties:
 - Name
 - Text color
 - Text size
 - Text alignment
 - Insert background picture
 - Dimensions and position



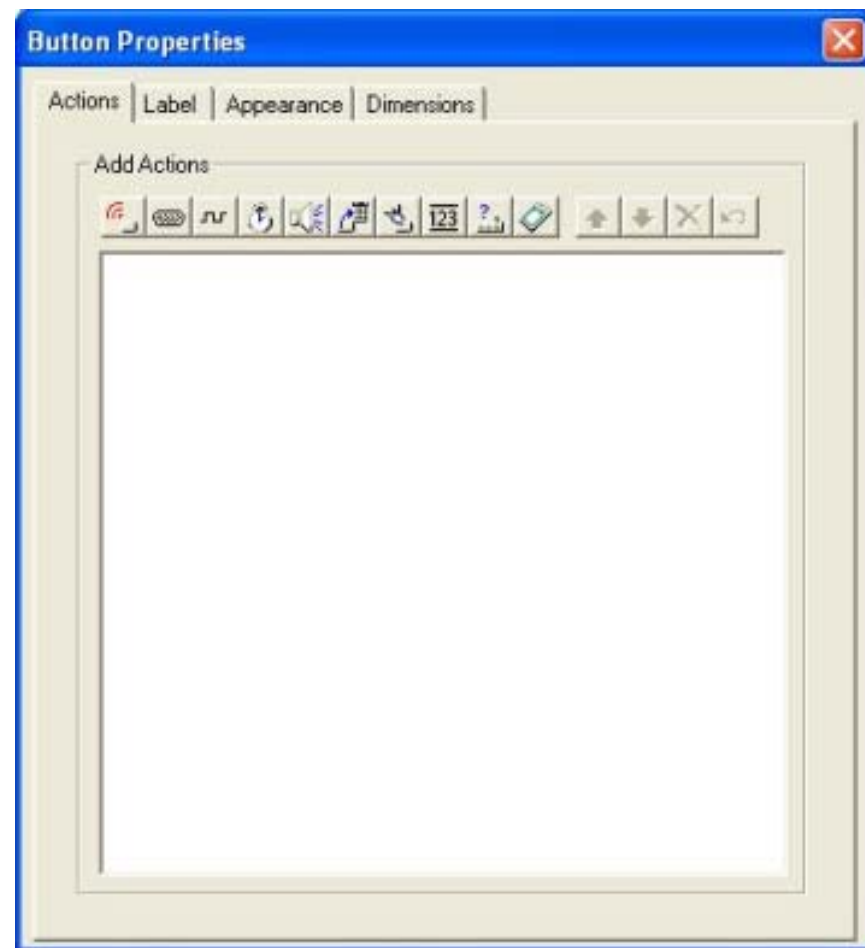
Button

- You can insert a button from the Gallery, or you can insert your own bitmap.
- Each button has 2 states:
 - released state
 - pressed state




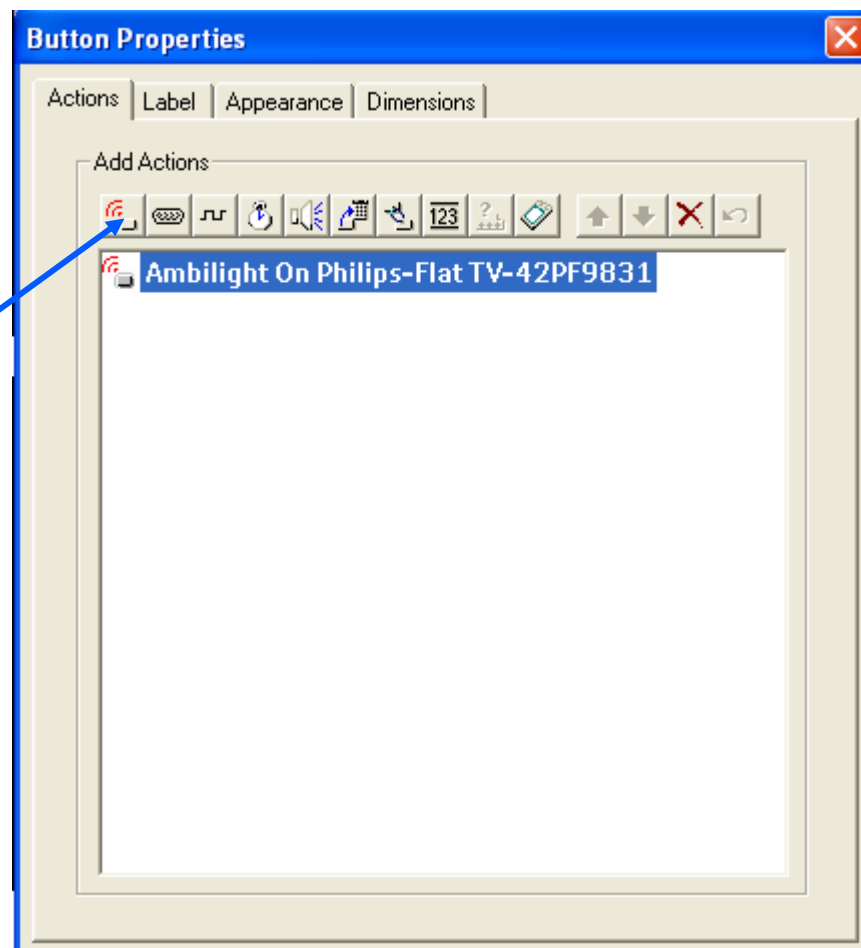
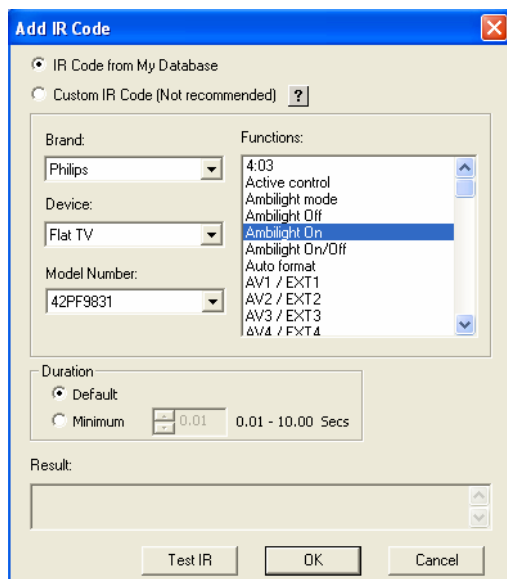
Actions for Basic Configuration

- IR actions
- Delay
- Sound
- Jump
- Channel Macro
- Special action
 - Page up
 - Page down
 - Home
 - Browse backward
 - Browse forward




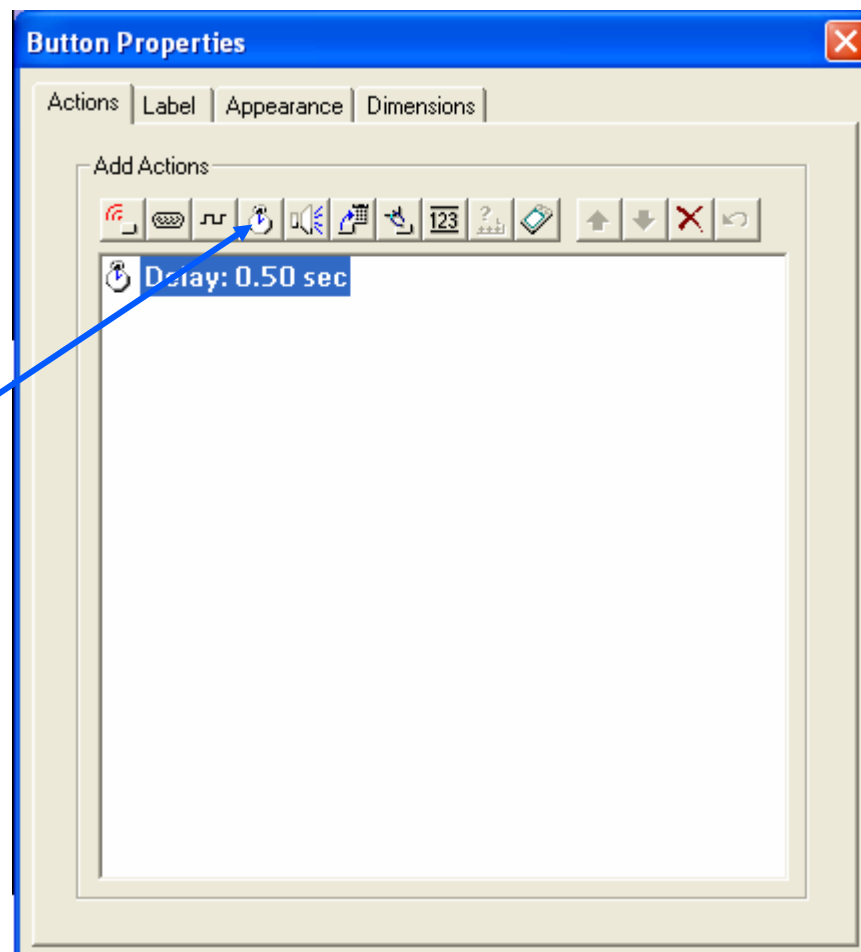
Actions for Basic Configuration

- Add an IR code: 
 - Select IR code from My Database
 - IR burst time is default 250msec




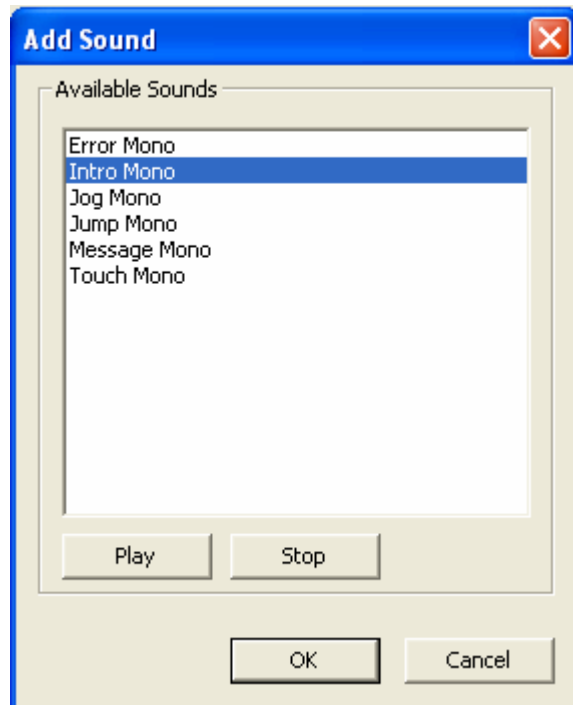
Actions for Basic Configuration

- Add a Delay: 
 - Used between 2 IR actions
 - Delay from 0.1 to 32sec

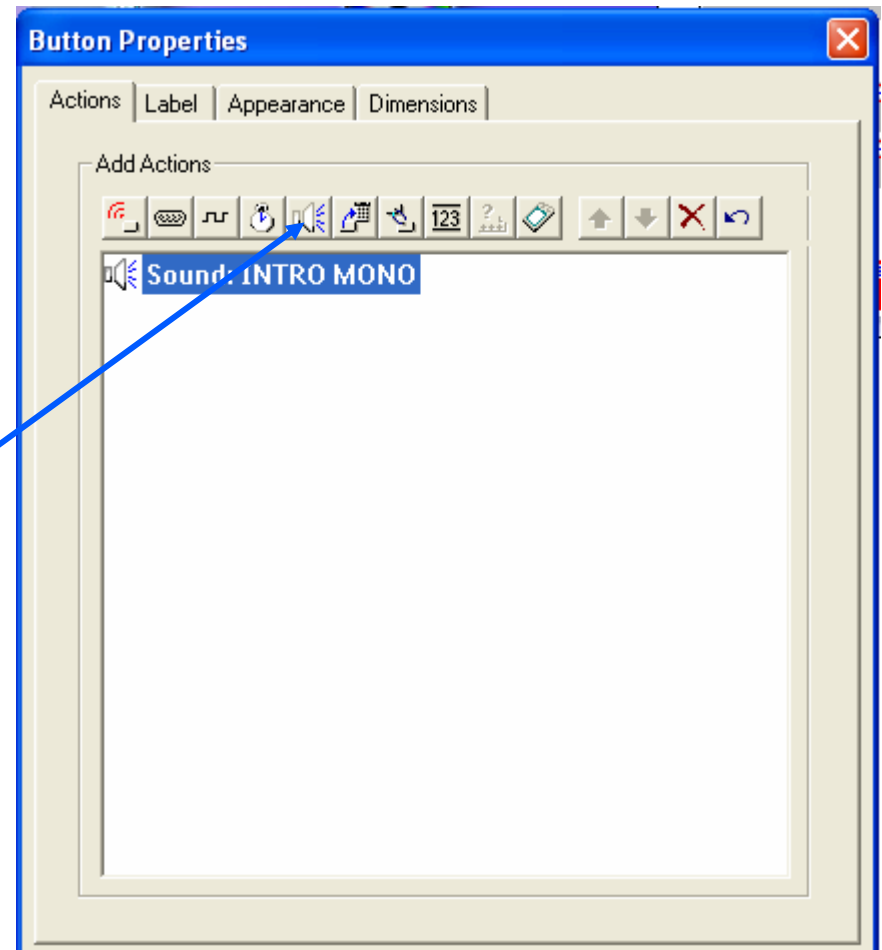


Actions for Basic Configuration


- Add a sound to a button: 
 - Select available sound

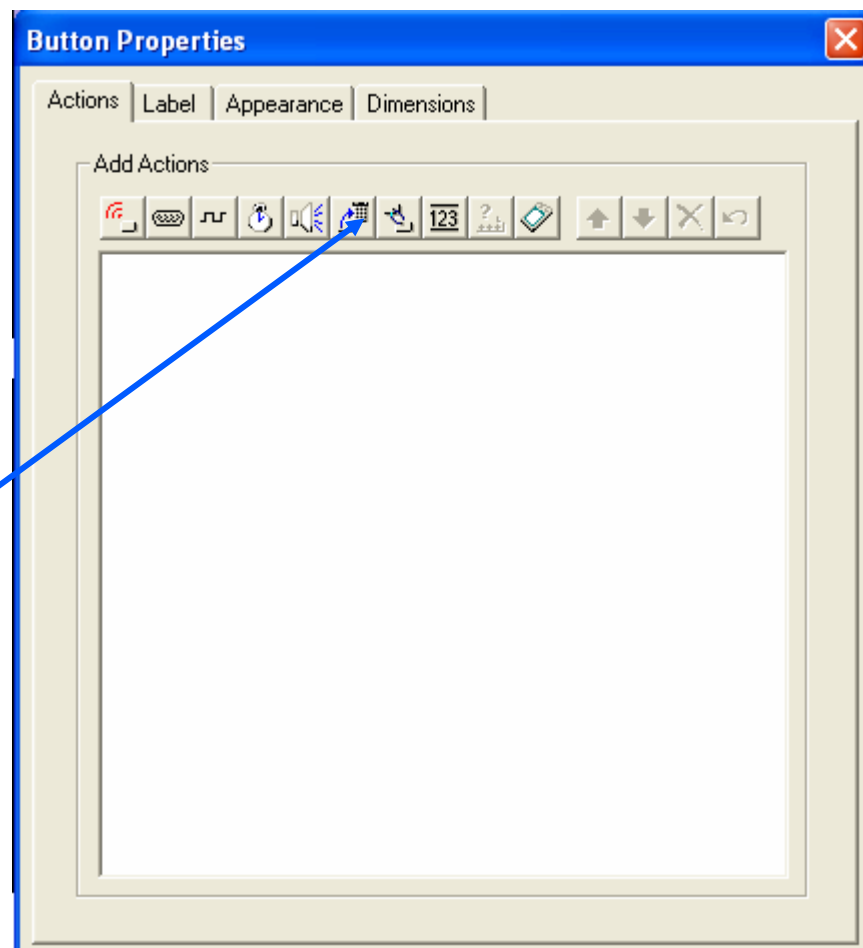
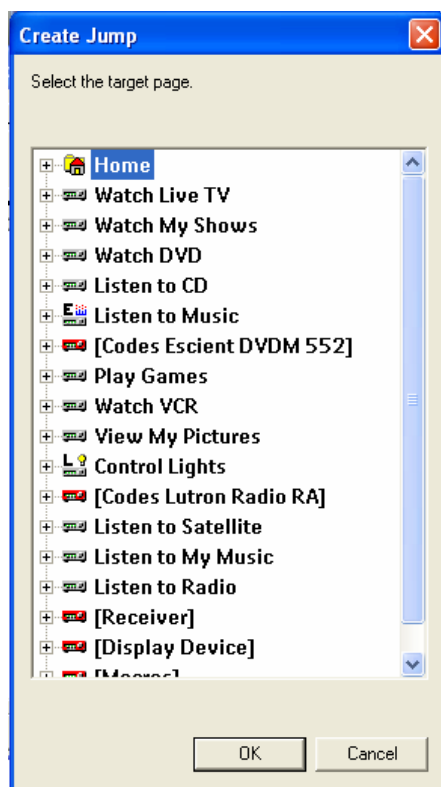


WAV file: 44.1KHz, 8 bit Mono




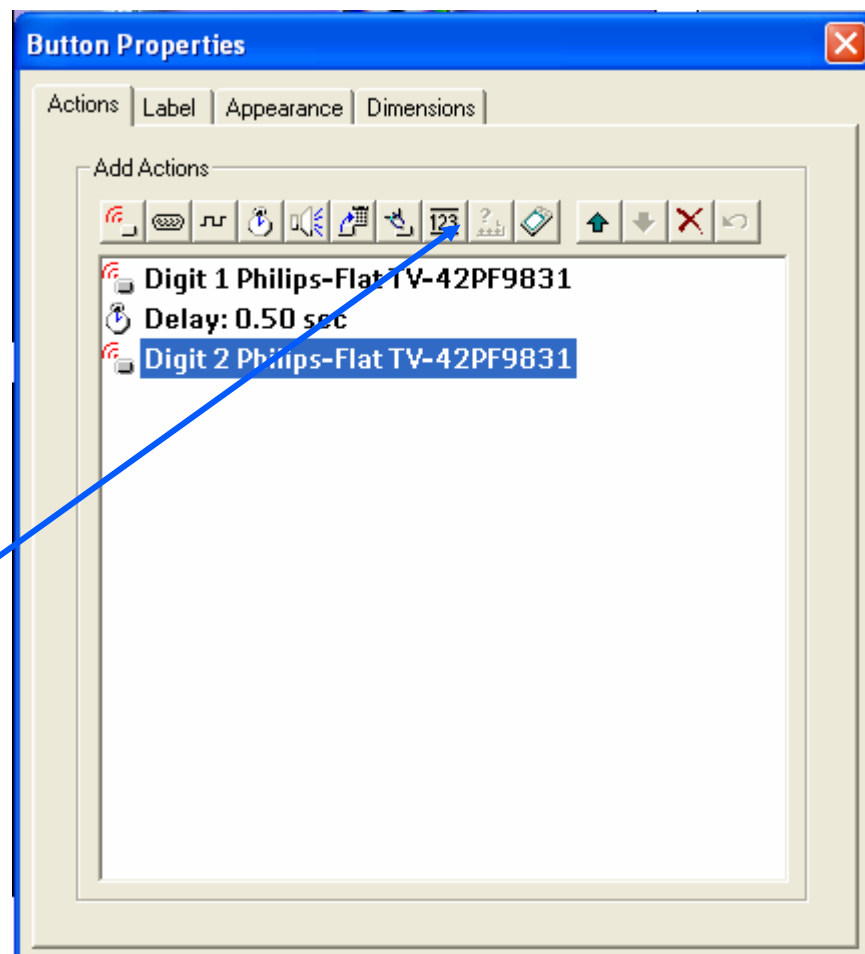
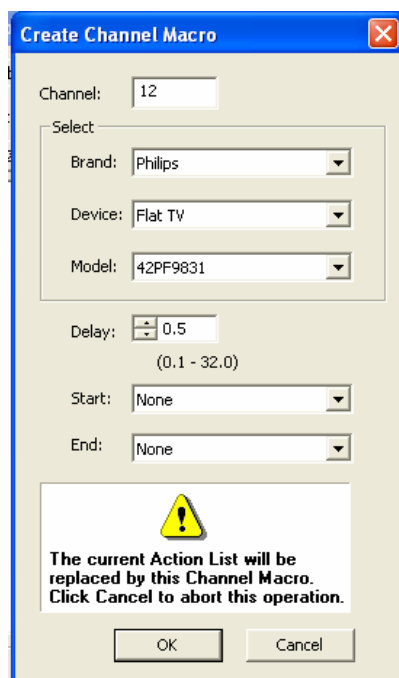
Actions for Basic Configuration

- Add a jump to a button:
 - Jump to another page




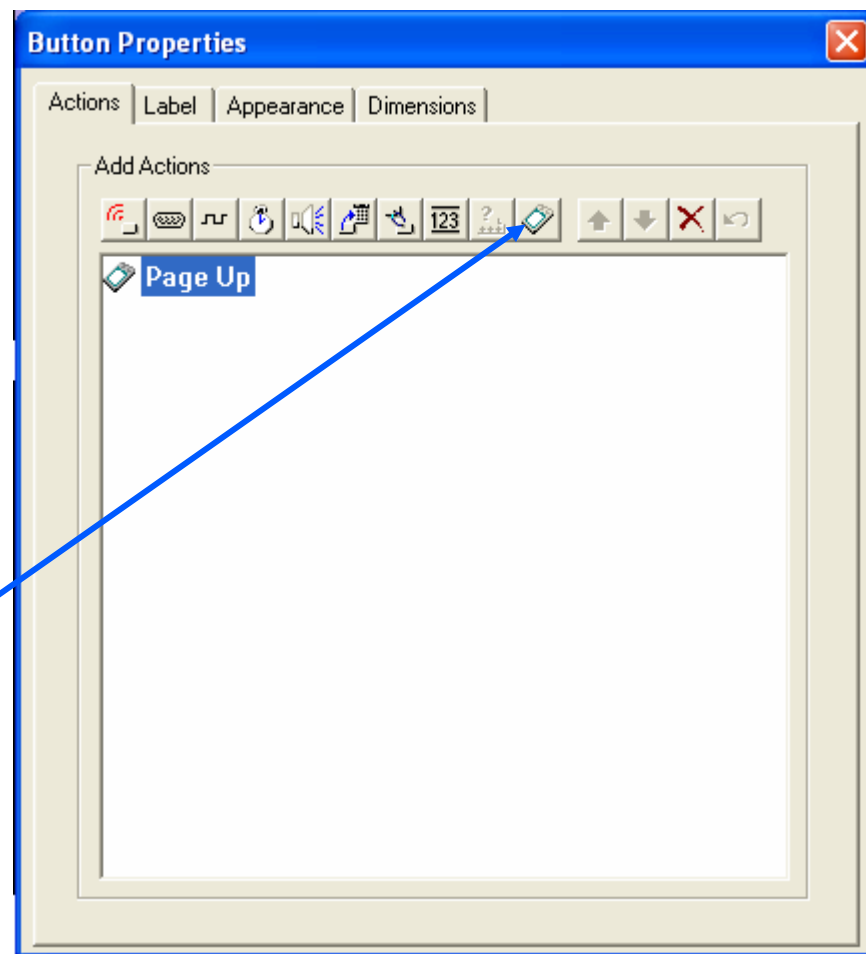
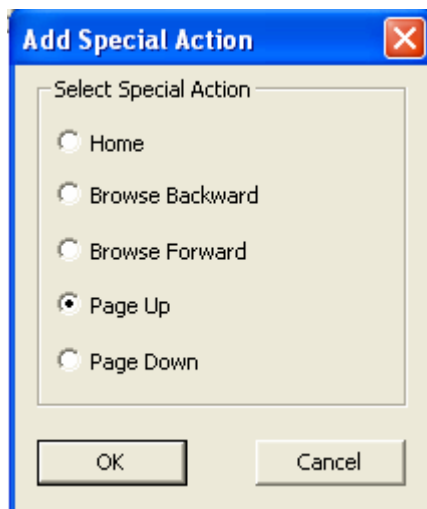
Actions for Basic Configuration

- Add a Channel Macro: 
 - Creating multiple actions in a quick way



Actions for Basic Configuration

- Add a special action: 
 - Jump to the Home page, browse backward, browse forward, page up and page down




Contents

- What is ProntoEdit Professional?
- Example default configuration file
- Pronto Emulator
- Download
- Function keys - shortcuts

Pronto Emulator

Testing your complete configuration on screen before downloading to Pronto

- Start the ProntoProfessional simulator via the toolbar  or select tools \ simulator.
- This simulator works like a real device.

No IR or RS232 is sent out.

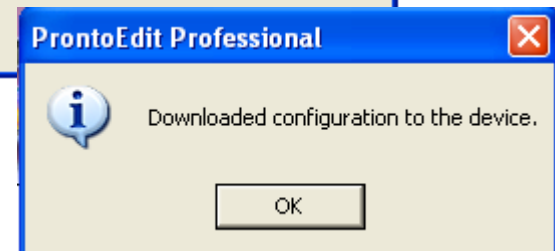
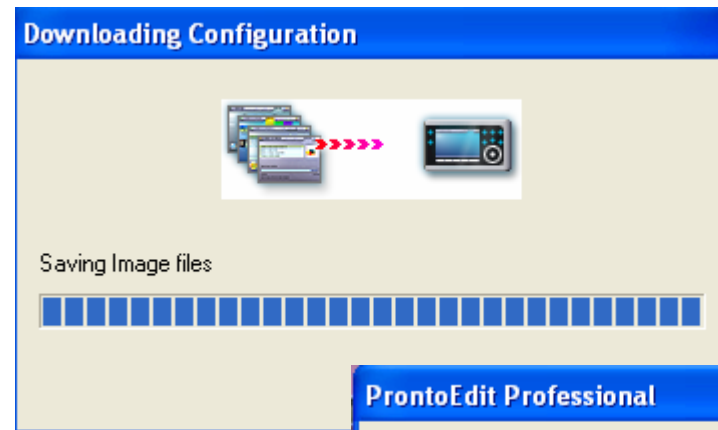


Contents

- What is ProntoEdit Professional?
- Example default configuration file
- Pronto Emulator
- Download
- Function keys - shortcuts

Download

- Connect the Pronto Docking to your PC
- Place Pronto into Docking
- Download configuration to Pronto



Contents

- What is ProntoEdit Professional?
- Example default configuration file
- Pronto Emulator
- Download
- Function keys - shortcuts

Function keys

- F1 activating the Help file
- F2 viewing properties of selected device
- F6 toggle from pageview to tree view
- F7 select next button in page view, or select next page in tree view
- F8 activate to create channel macro in page view

PHILIPS



Adapt the default configuration - Example



Contents

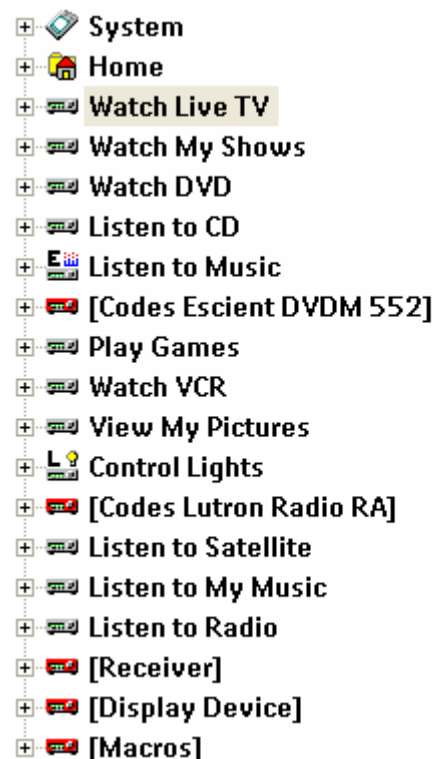
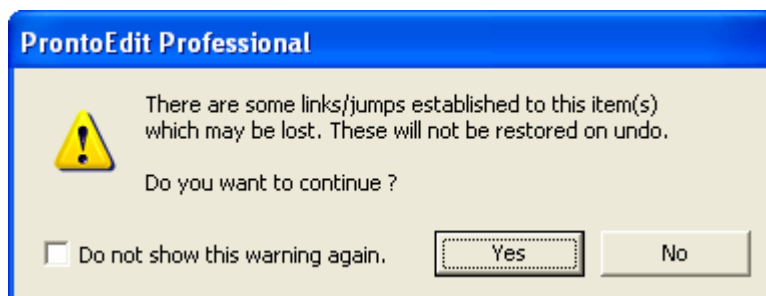
- Delete activity
- Change an existing activity
- Create a new device / activity

Contents

- Delete activity
- Change an existing activity
- Create a new device / activity

Delete activity

- Using the default TSU9600Demo.xcf file
 - Delete all not needed devices in tree view
 - Devices with links will popup a warning

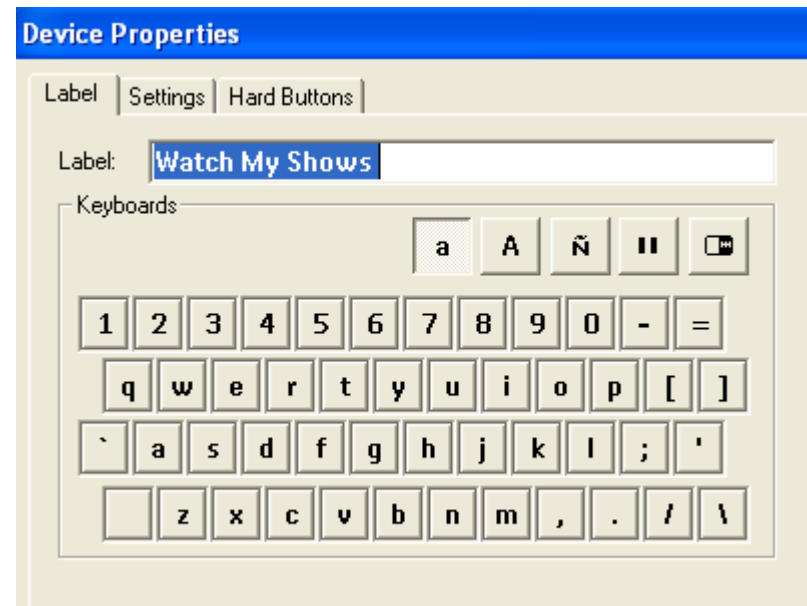


Contents

- Delete activity
- Change an existing activity
- Create a new device / activity

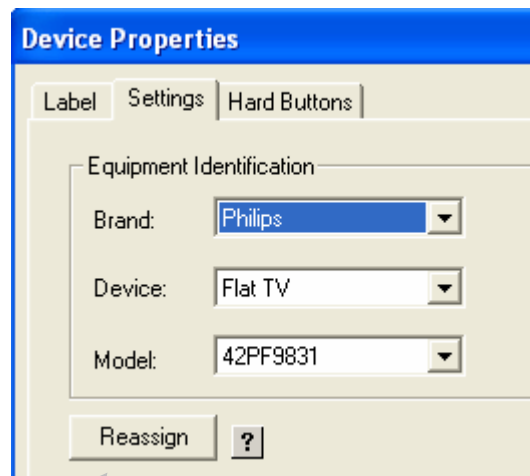
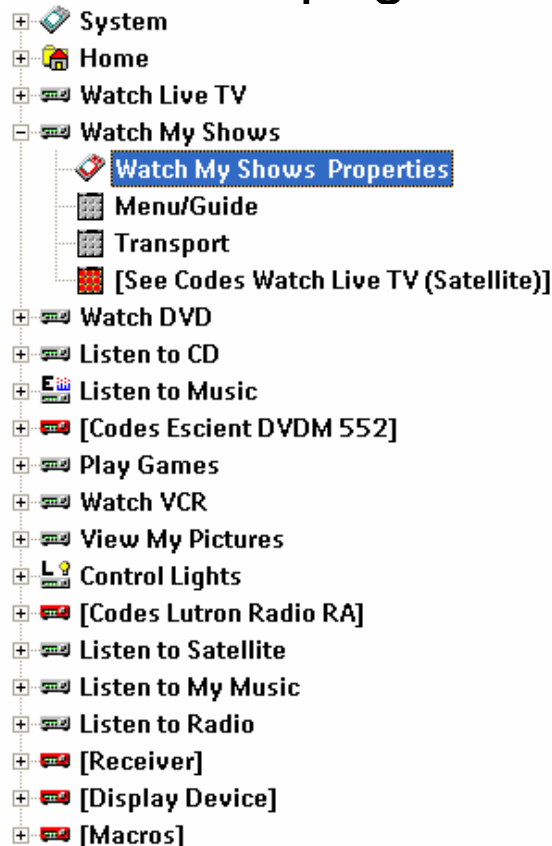
Relabel the activity

- Relabel the devices for your project when needed
 - The names will be visible on the Pronto



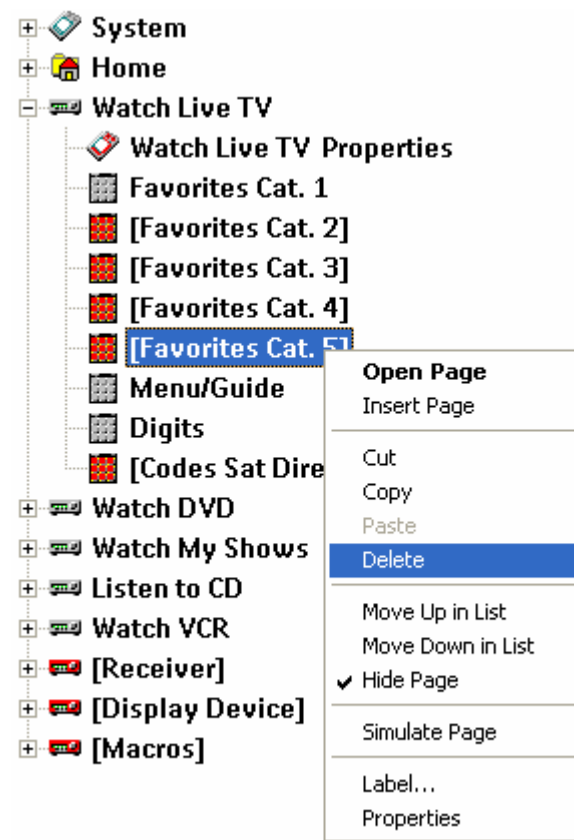
Reassign the device.

- Reselect another device in the device properties
 - Use the Reassign button to change the IR codes on the codes page



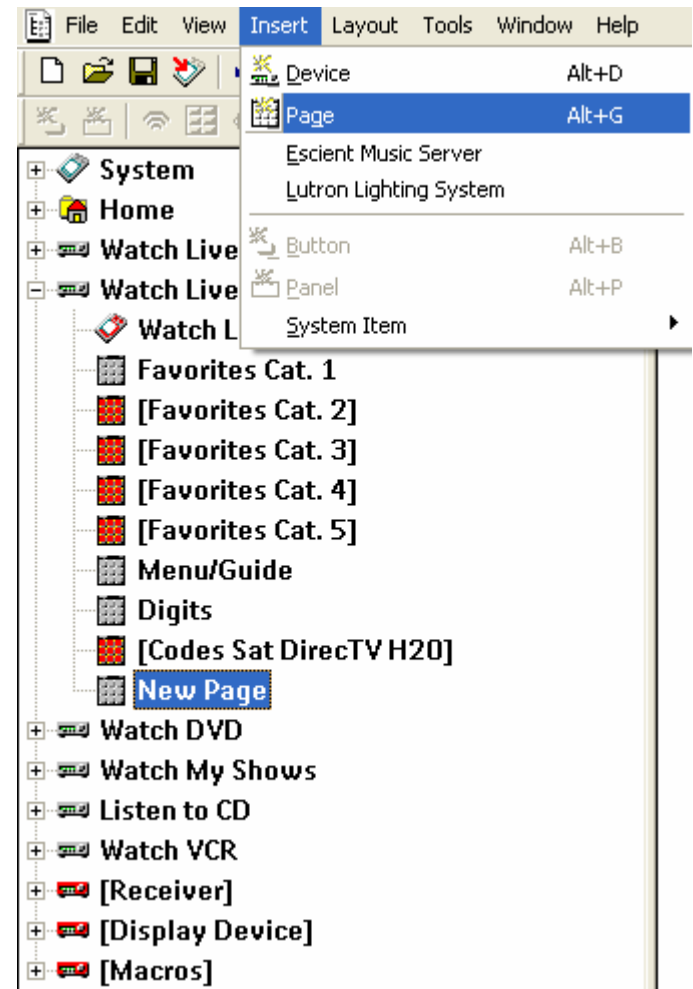
Deleting and renaming pages

- Delete all pages that you will not use.
- Rename the used pages.



Insert a new page

- Add new:
 - Select the Device in the tree view.
 - Insert Page.
 - Relabel New Page.
- Copy an existing one
 - Select the page to copy.
 - Press <<CTRL>>button and drag page down.



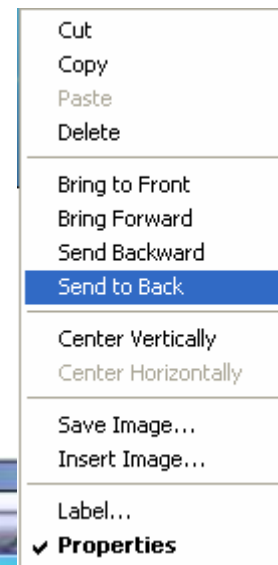
Re-order pages

- Simple re-order pages by dragging them to correct position.



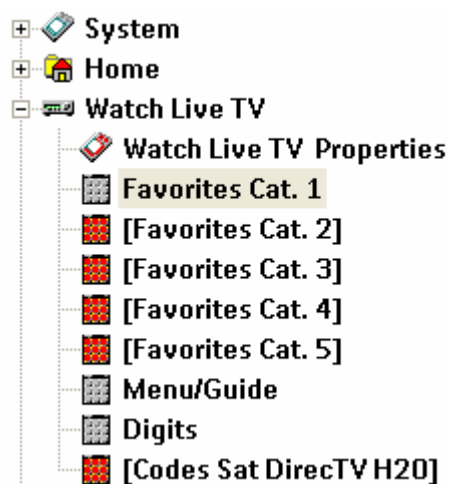
Change layout on pages

- Change appearance of the panel.
- Select from gallery.
- Adjust Z-order.



Add channel icons on pages.


- Drag/drop TV icons from Gallery, with shift button pressed.

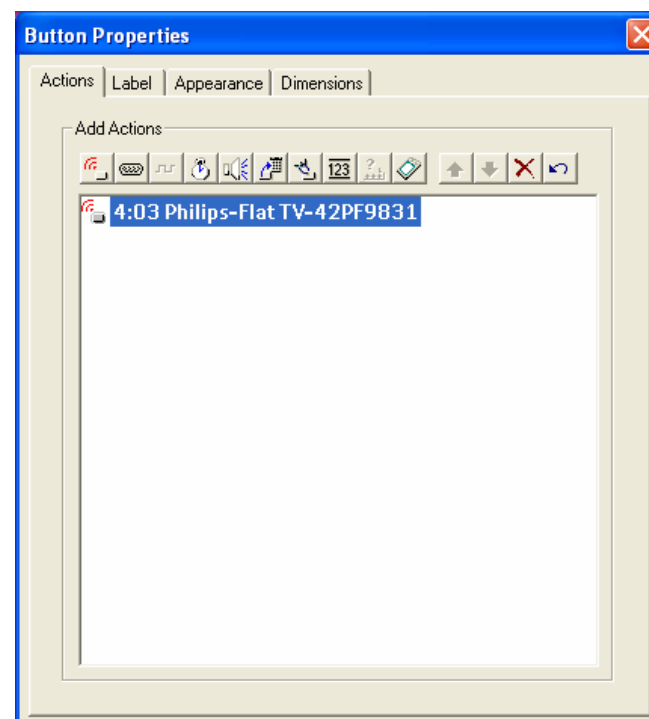


Change button activities

- You can delete the default IR code.

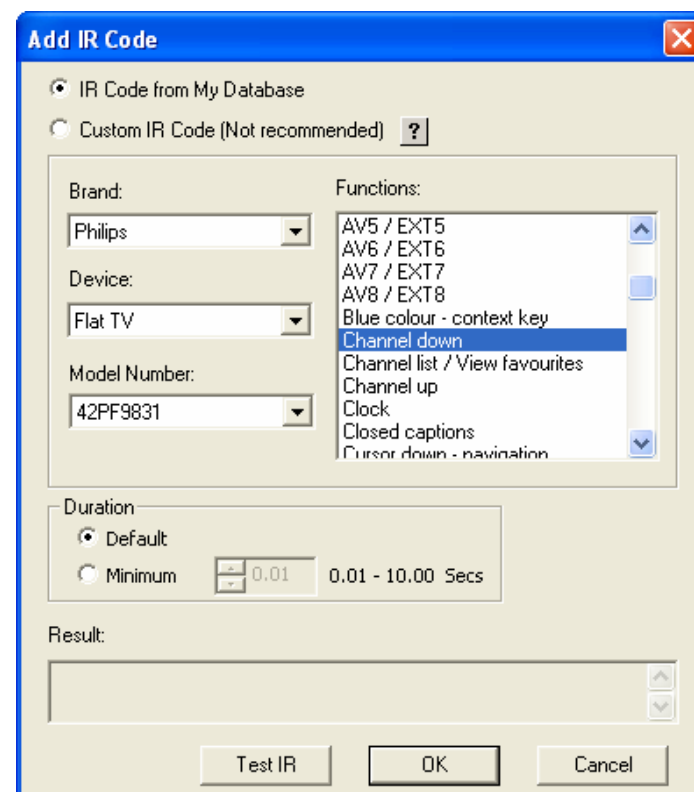
Adding a new action:

Jump to another page  or
add a new IR code 



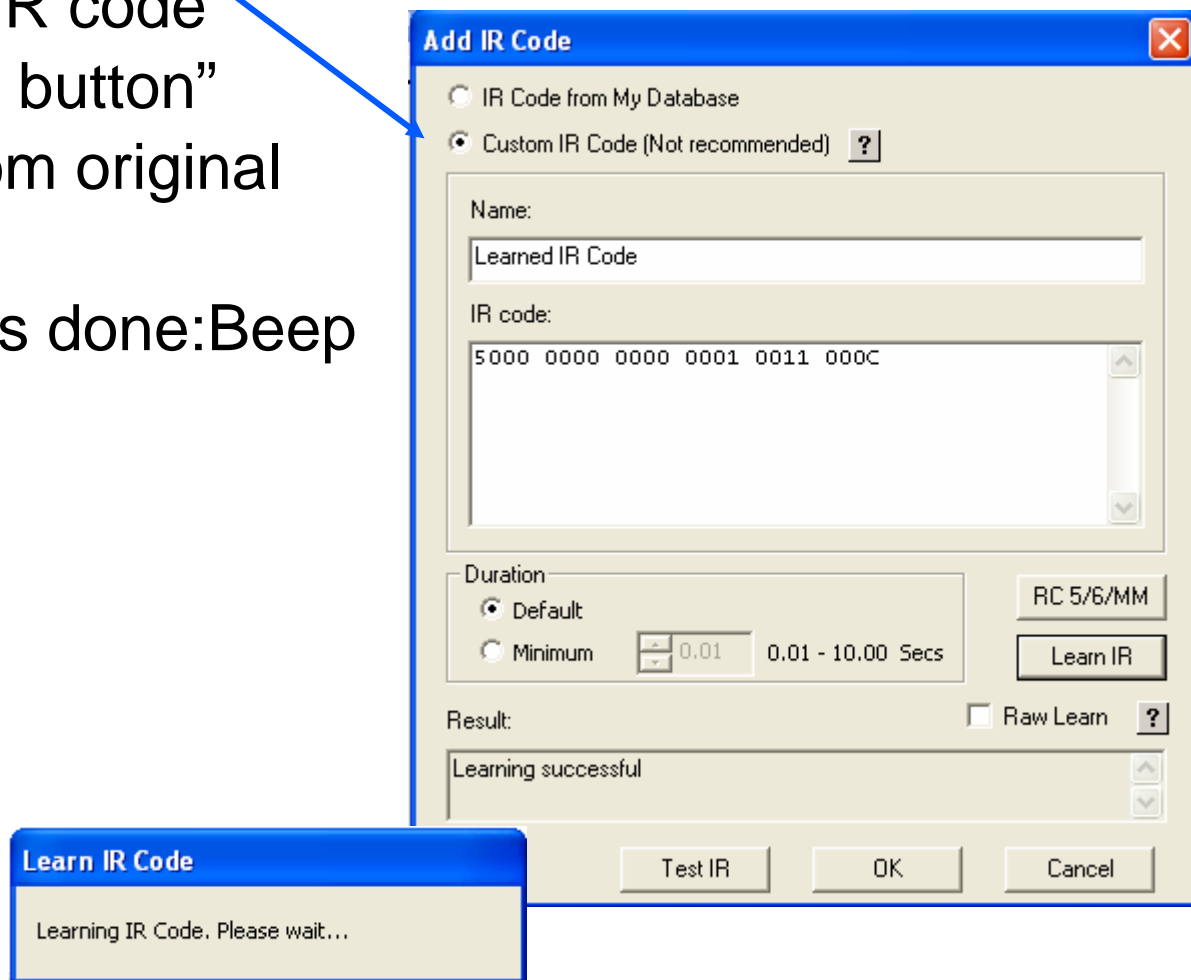
Change IR codes using the database

- Searching in My Database
- Select:
 - Brand
 - Device
 - Model number
- Select:
 - Function



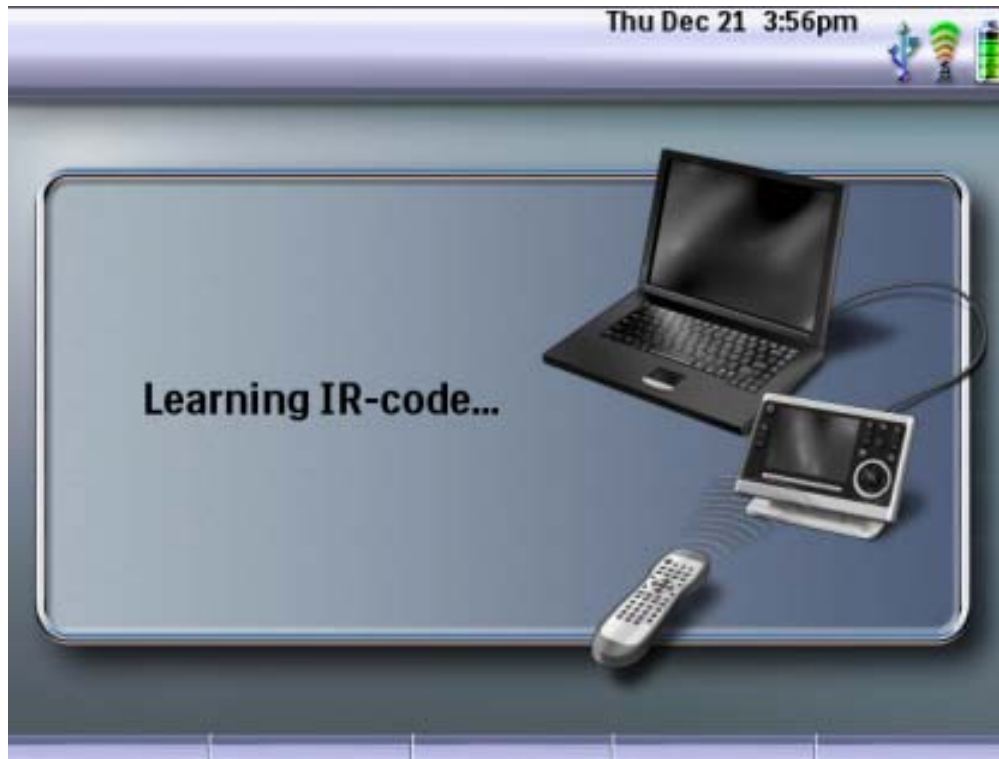
Change IR codes by learning your own codes

- Select Custom IR code
- Press “Learn IR button”
- Press button from original remote.
- When learning is done:Beep



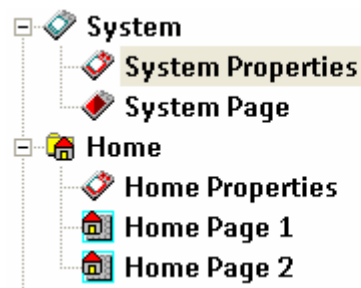
Change IR codes by learning your own codes

- Pronto screen during the IR learning action

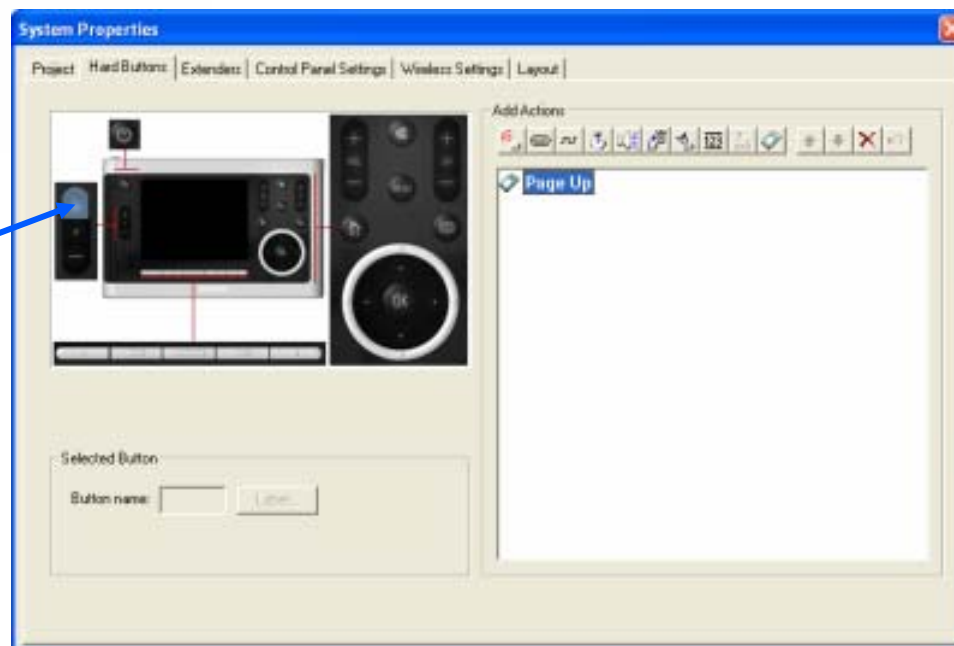


Change IR codes on the hard buttons

- The hard buttons can be defined for often used actions e.g. volume up, volume down, standby,...

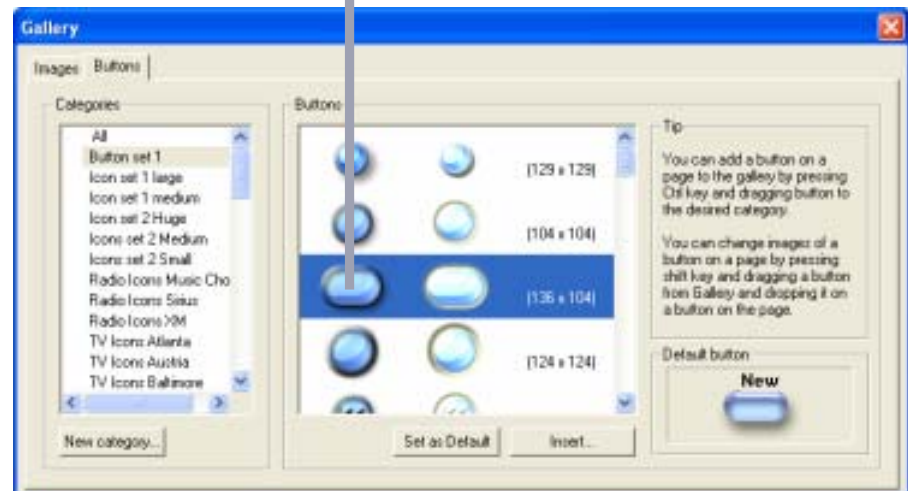
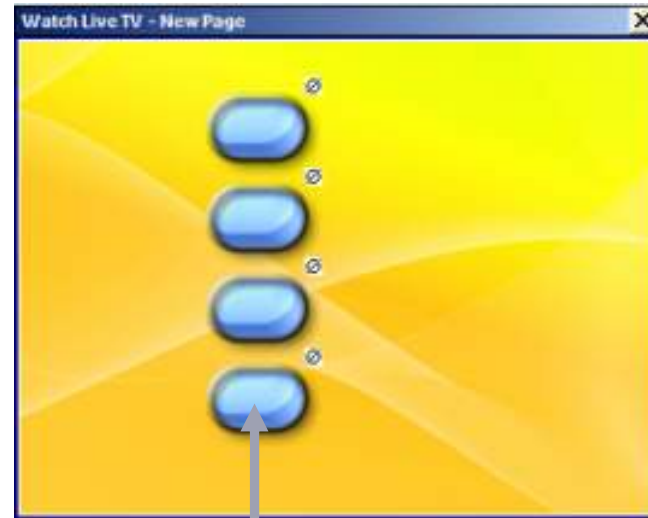


Press



Create new Buttons

- Add a new button
 - Drag a button from the Gallery onto the page.
- Copy an existing button on the page, using <<Ctrl>> pressed and drag the button.

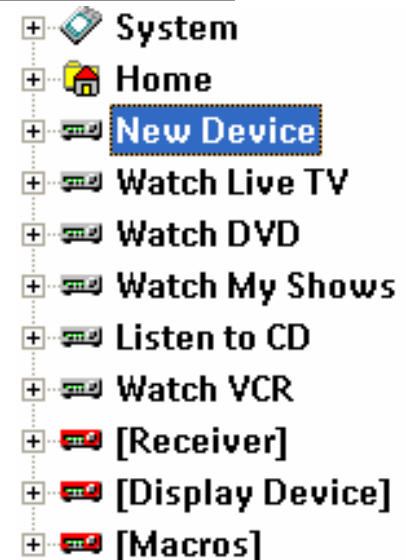
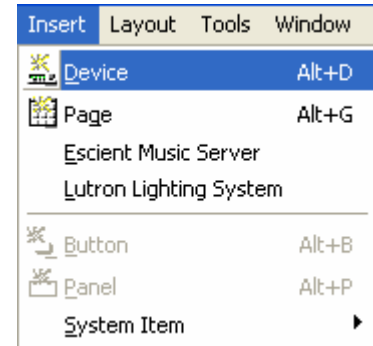


Contents

- Delete activity
- Change an existing activity
- Create a new device / activity

Create a new Device

- Add a new Device
 - Insert new device in the tree view
 - Relabel the Device
 - Select type of Device
- Copy an existing Device in the tree view
 - Select the Device
 - Press <<Ctrl>> button
 - Drag the Device
 - Relabel the Device (right mouse click)



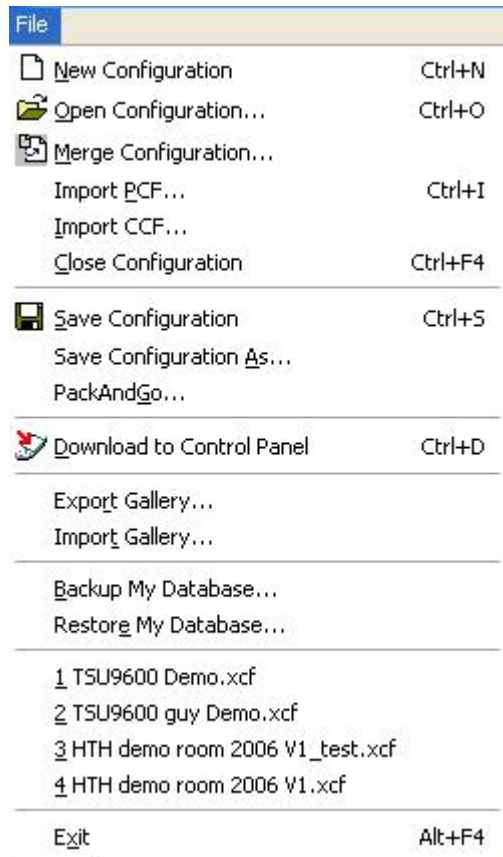
PHILIPS



Reference: The Toolbar + Menu



Pronto Edit Professional toolbar



New configuration: to create a new config

Open configuration: to open an existing config

Merge configuration: to merge the current config with another config

Import PCF & CCF: to import older configuration to use on the TSU9600

Save/ Save as: saving the current config

Pack and Go: to create an executable file for demo

Download to Pronto: send file to Pronto

Export Gallery: export gallery to harddisk

Import Gallery: import gallery to harddisk

Backup My database: make backup to harddisk

Restore My database: recover database from harddisk

Pronto Edit Professional toolbar

Edit	
Undo	Ctrl+Z
Redo	Ctrl+Y
Cut	Ctrl+X
Copy	Ctrl+C
Paste	Ctrl+V
Delete	Del
Move Up in List	Ctrl+Up
Move Down in List	Ctrl+Down
Select Next Item	Tab
Select Previous Item	Shift+Tab
Select All Items	Ctrl+A
Deselect Items	Esc
Hide Device	
Hide Page	
Device Settings...	
Label...	F2

Undo: undo the last operation

Redo: recover the last operation

Cut: remove the selected item

Copy: copy the selected item

Paste: paste the copied item

Delete: delete the selected item

Move up in list: move up the selected item in list

Move down in list: move down the selected item in list

Select Next item: select next item in page view

Select previous item: select previous item in page view

Select All Items: select all items in page view

Deselect Items: undo selected items

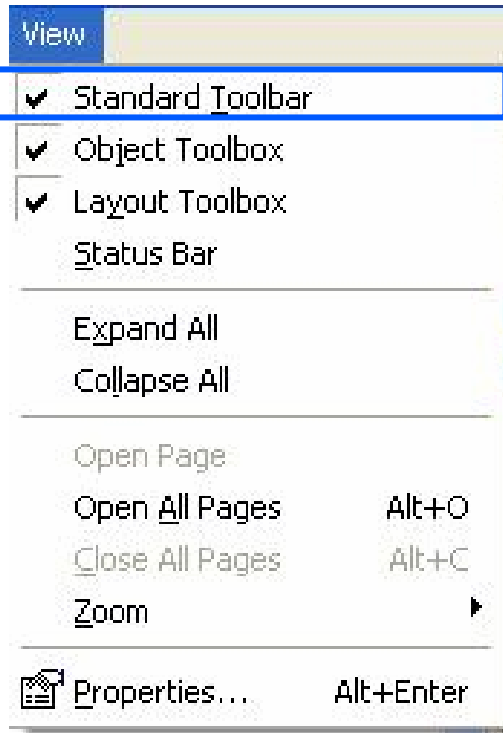
Hide device: when selected in tree view, the device is invisible on Pronto

Hide Page: when selected in tree view, the page is invisible on Pronto

Device setting: viewing device properties box

Label: rename the device in tree view

Pronto Edit Professional toolbar

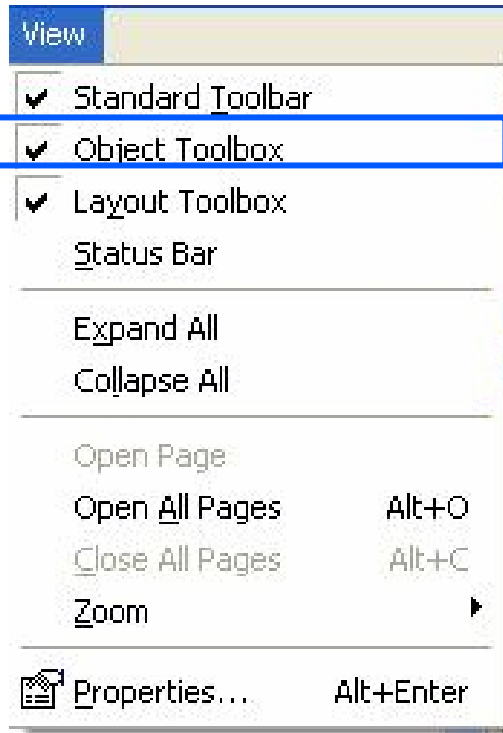


Features:

new file / open file / save / download to pronto / turn left / turn right / cut / copy / paste / delete / label / show properties / insert device / insert page / insert Escient music server / insert Lutron lighting system / start simulator / open gallery / open MyDatabase / help

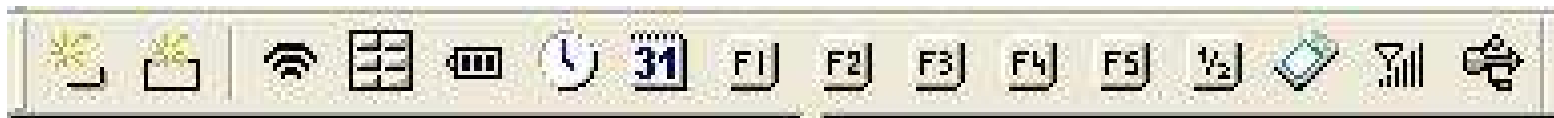


Pronto Edit Professional toolbar

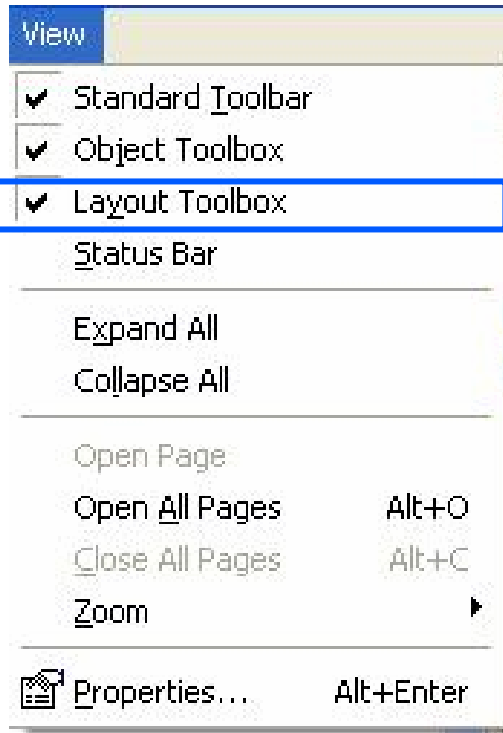


Features:

Inserting only in system page:
button / panel / sending icon /
device / battery level / time /
date / firm key 1...5 / page number /
button / Wifi level / USB item



Pronto Edit Professional toolbar

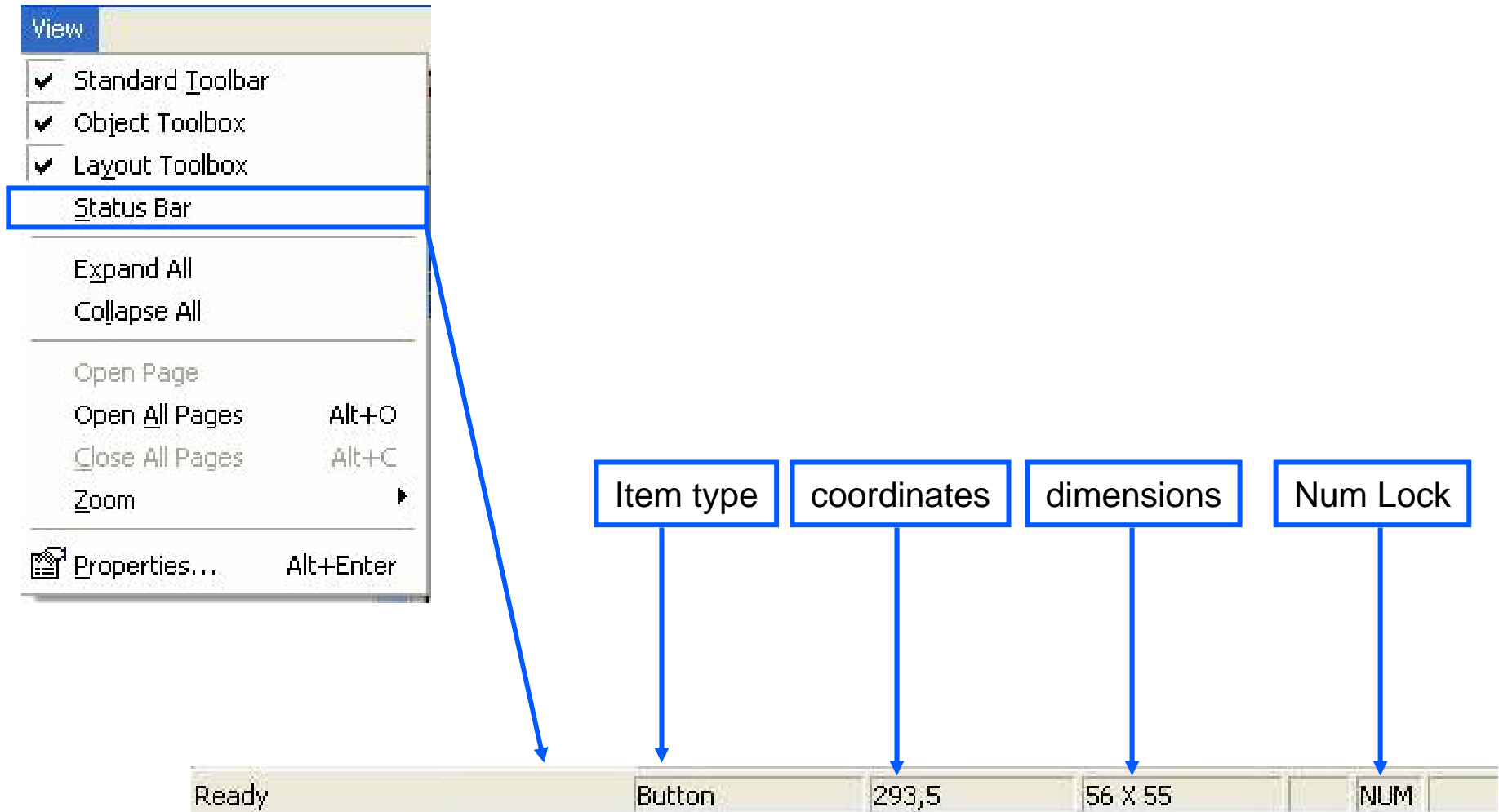


Features:

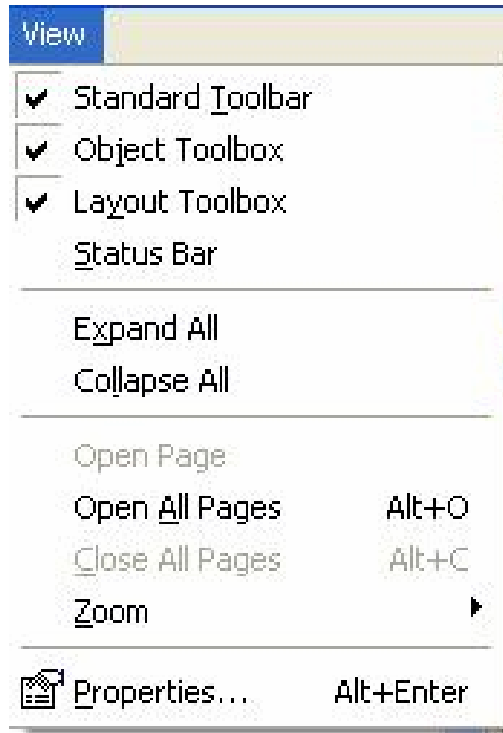
zoom in / zoom out / insert grid / insert border /
bring to front / bring forward / bring backward /
send to back / group items / ungroup items /
center vertically / center horizontally /
space even vertically and horizontally /
left align / right align / center align / top align /
bottom align / middle align



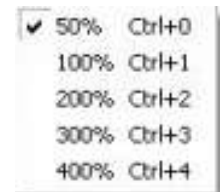
Pronto Edit Professional toolbar



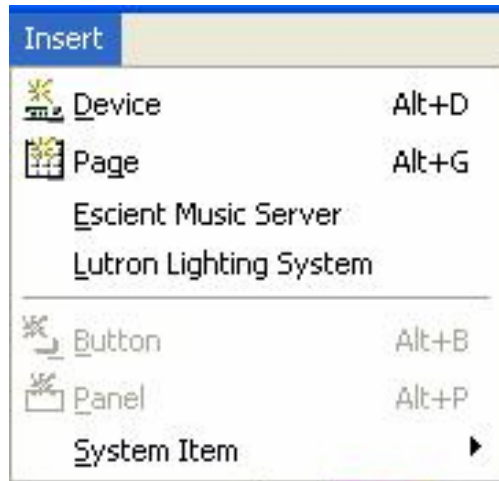
Pronto Edit Professional toolbar



- **Expand all:**
 - Open all the devices in the tree view
- **Collapse All:**
 - Close all the devices in the tree view
- **Open page:**
 - Open the selected page on view page (identical as double click)
- **Open and close All pages:**
 - Open and close all pages for the selected device in the page view
- **Zoom:**
 - Zoom the page on view page
- **Properties:**
 - View properties of selected device/page

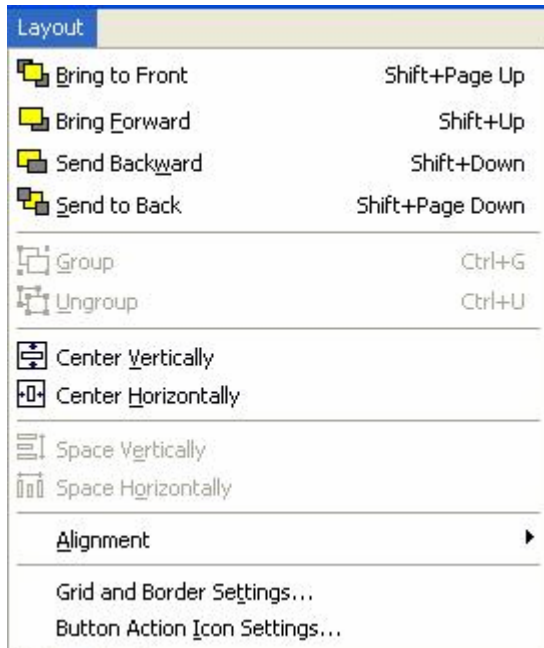


Pronto Edit Professional toolbar



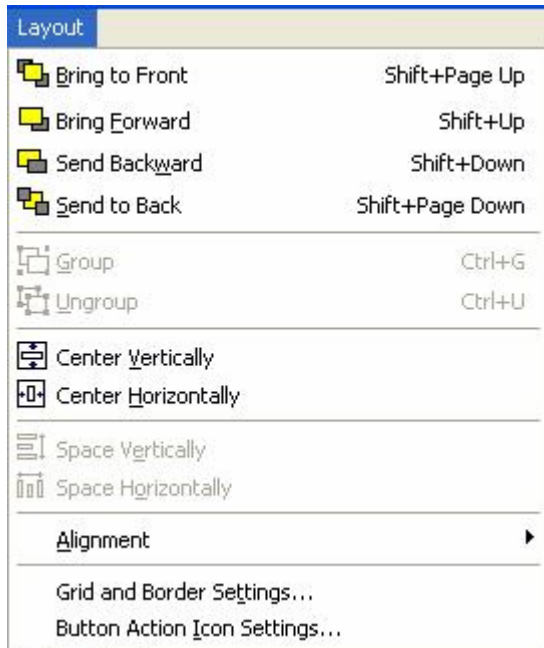
- **Device:**
 - Insert new device in tree view
- **Page:**
 - Insert new page in tree view
- **Escient Music Server:**
 - insert Escient Music Server in tree view
- **Lutron Lightings System:**
 - insert Lutron Lighting system in tree view
- **Button:**
 - Add button in page
- **Panel:**
 - Add panel in page
- **System item:**
 - Add different items is the page view

Pronto Edit Professional toolbar



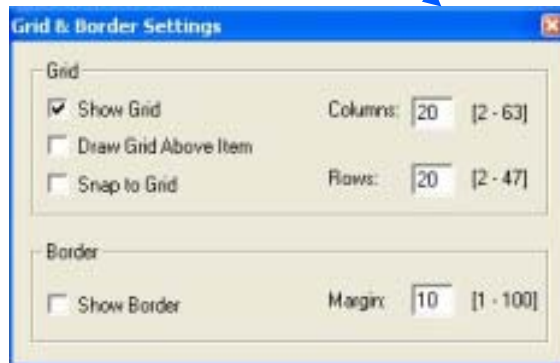
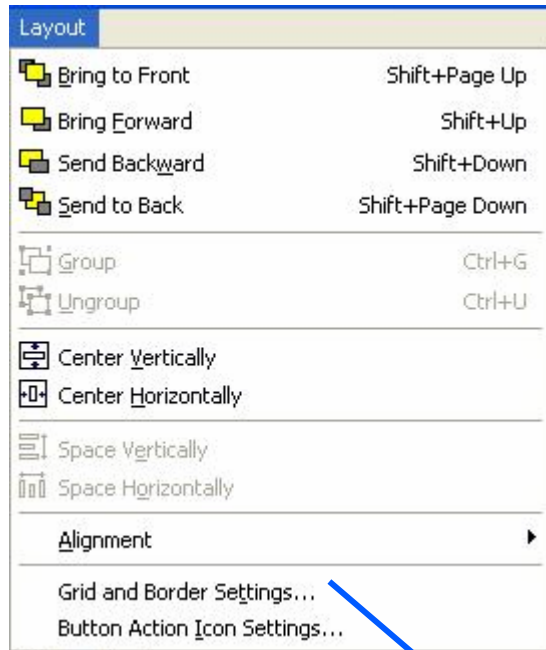
- **Bring to front:**
 - Bring button/panel to front in page view
- **Bring to Forward:**
 - Bring button/panel one step forward in page view
- **Send Backward:**
 - Send button/panel backward in page view
- **Send to Back:**
 - Send button/panel to back in page view

Pronto Edit Professional toolbar



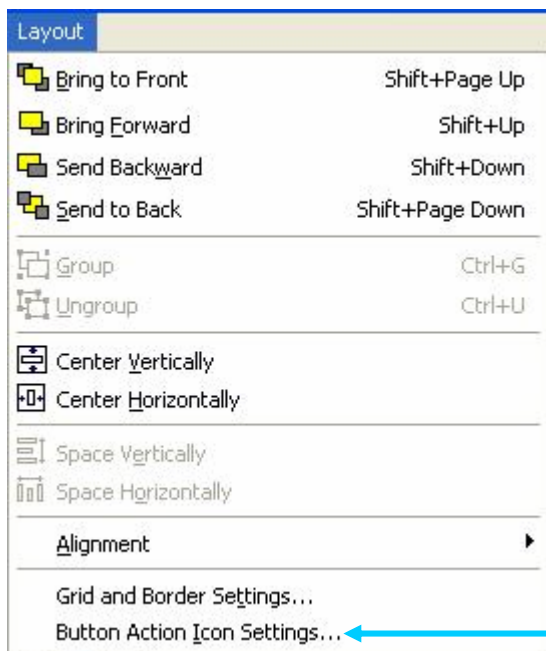
- **Group:**
 - Group selected items in page view
- **Ungroup:**
 - Ungroup selected items in page view
- **Center vertically/ horizontally:**
 - Placing selected item in center of page
- **Space vertically/ horizontally:**
 - Divide selected items in center of
- **Alignment :**
 - left/right/center/top/bottom/middle

Pronto Edit Professional toolbar

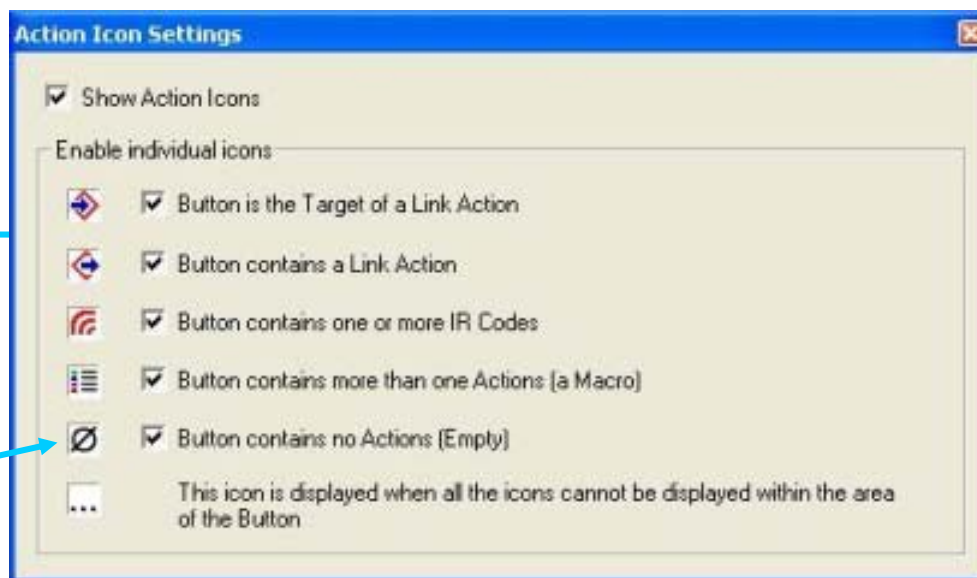


- Show grid
- View grid on page view
- Draw grid above item
- To view grid on top of items
- Snap to grid
- Placement of items on grid
- Columns / rows
- Adjusting grid resolution
- Show Border
- Show border line on grid
- Margin
- Adjusting margin resolution 1-100

Pronto Edit Professional toolbar

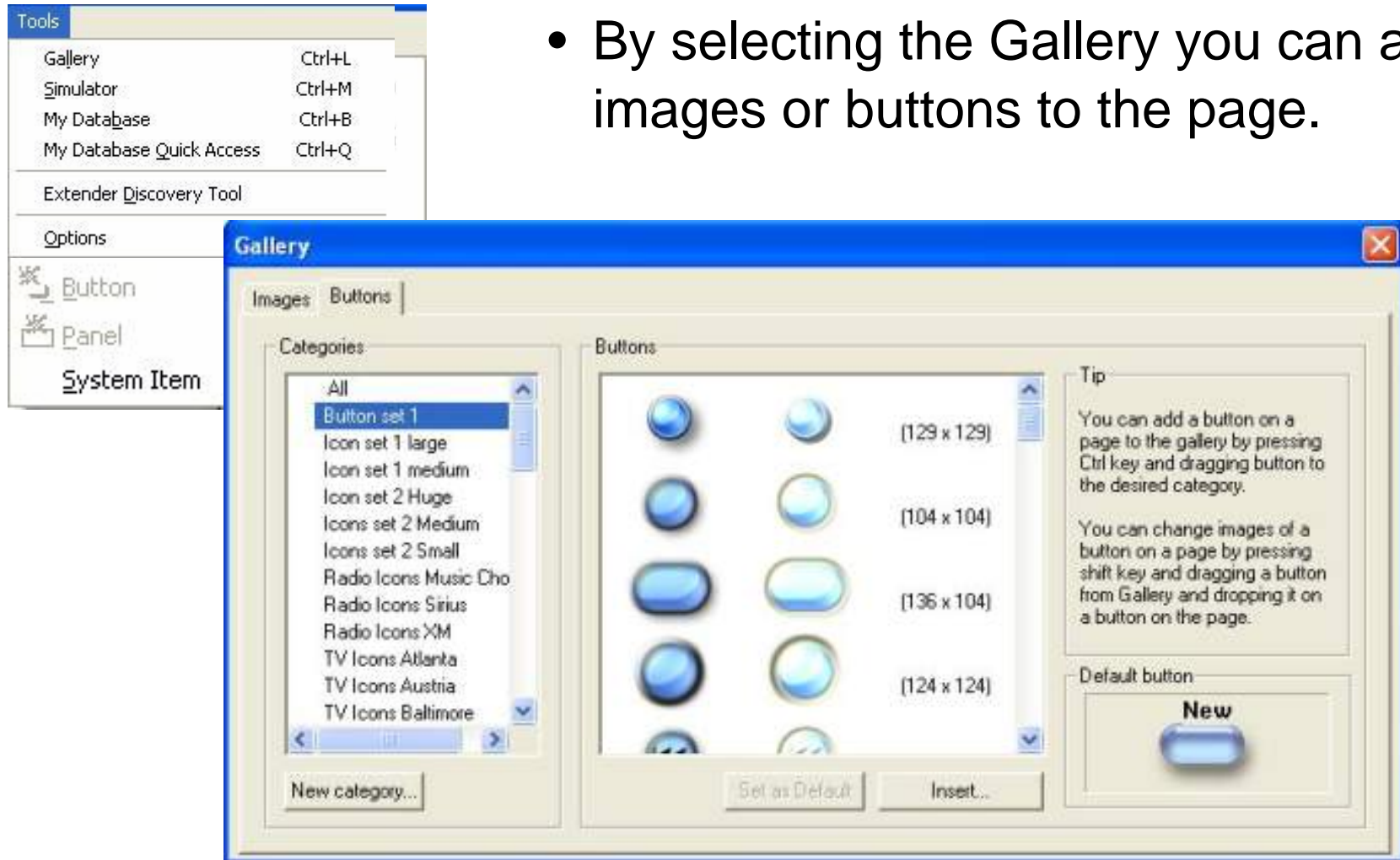


- The Button Action Icon is selectable for each action. You will see the action for each button in the right upper corner.

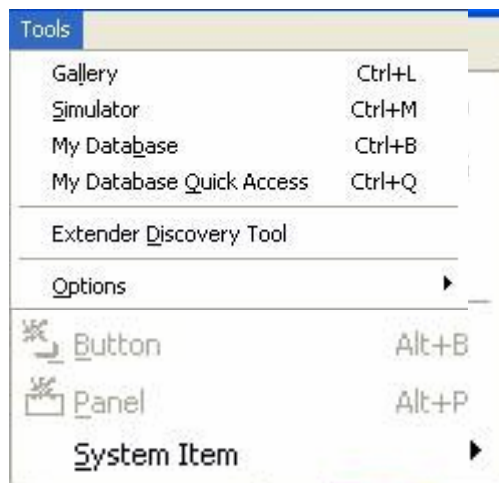


Pronto Edit Professional toolbar

- By selecting the Gallery you can add images or buttons to the page.



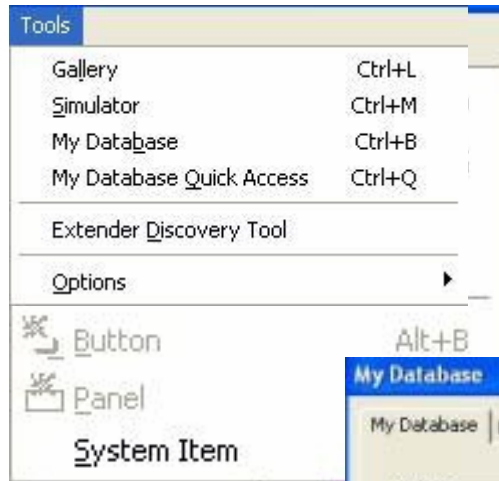
Pronto Edit Professional toolbar



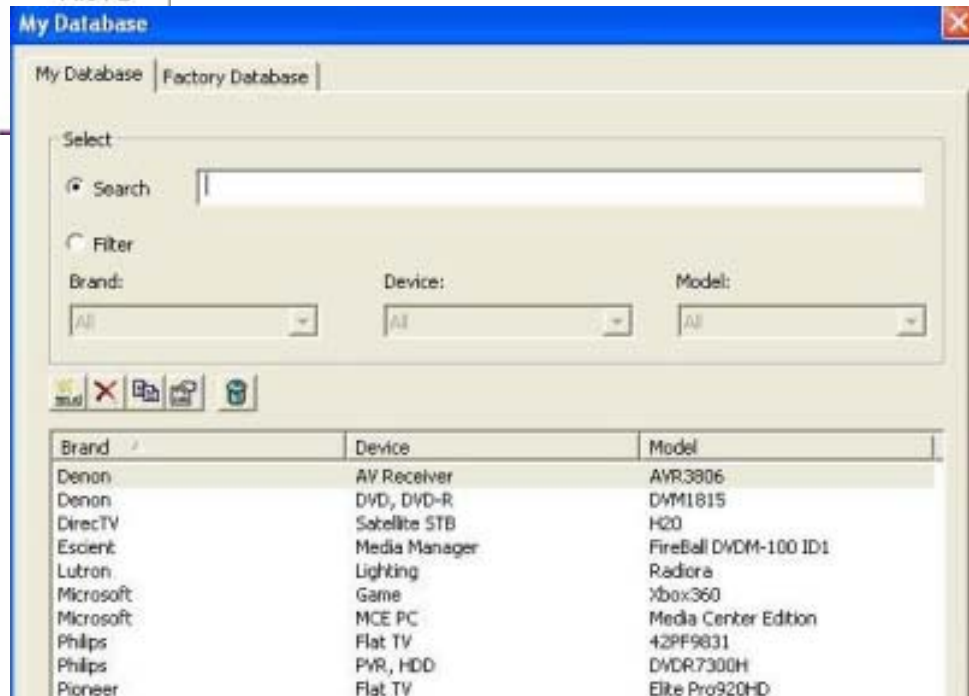
- When starting up the Simulator you can test the complete configuration on your PC before downloading to Pronto.



Pronto Edit Professional toolbar

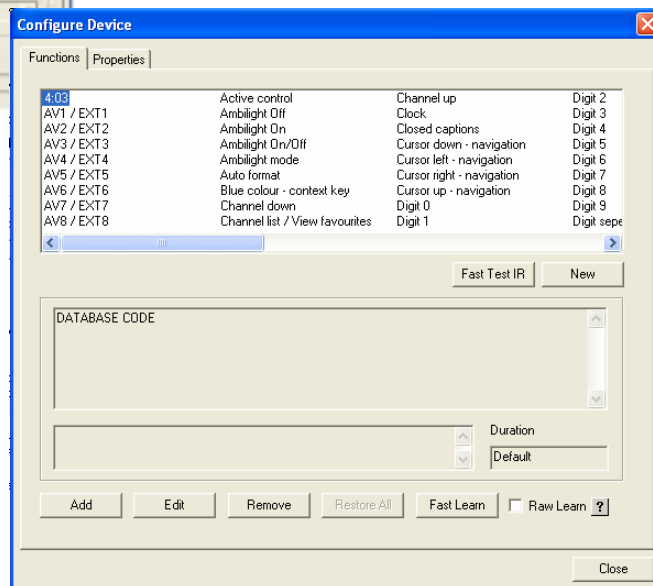
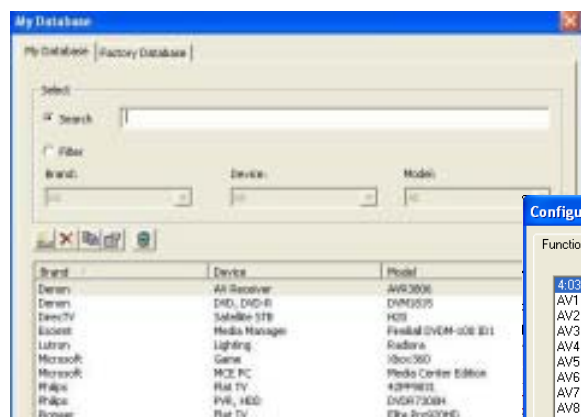


- MyDatabase is your personal database.
- Add devices from the Factory database or create new devices.



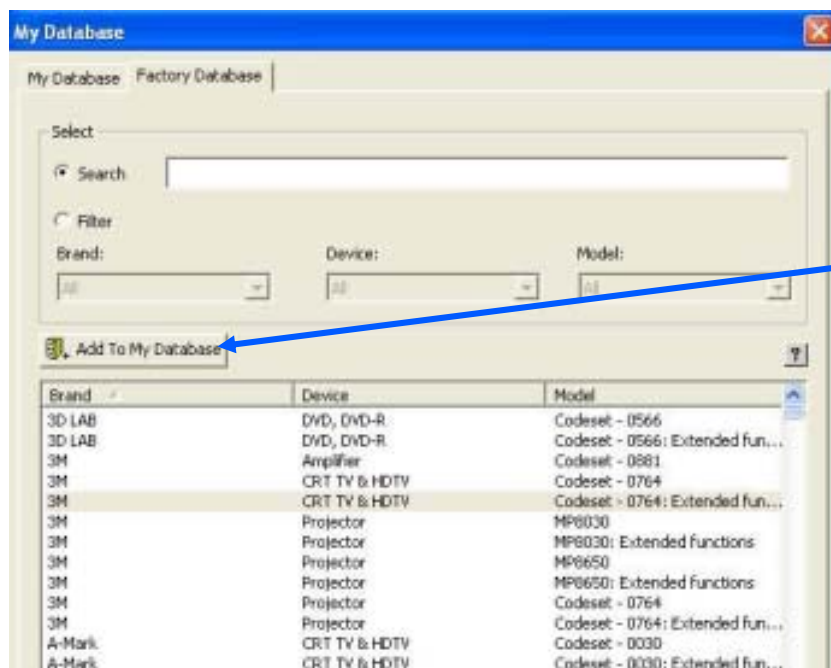
Pronto Edit Professional toolbar

- Search in the MyDatabase for a typical device.
- You can filter the search.
- Add new functions, test functions,...



Pronto Edit Professional toolbar

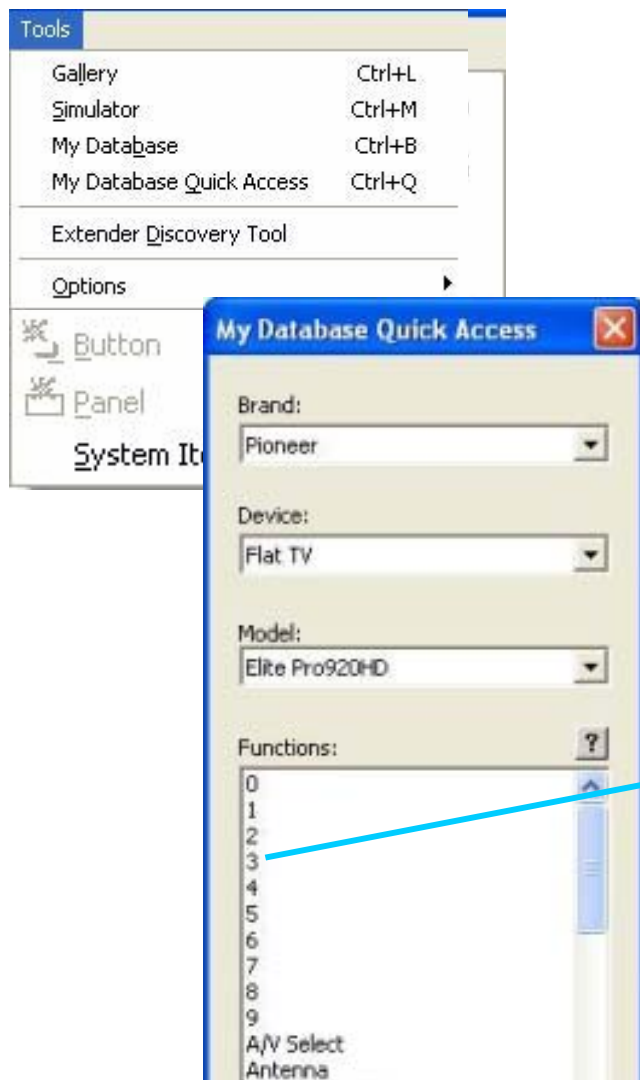
- Searching in the huge Factory Database for a typical device, and filter your search on brand – device and model.



Adding to My Database

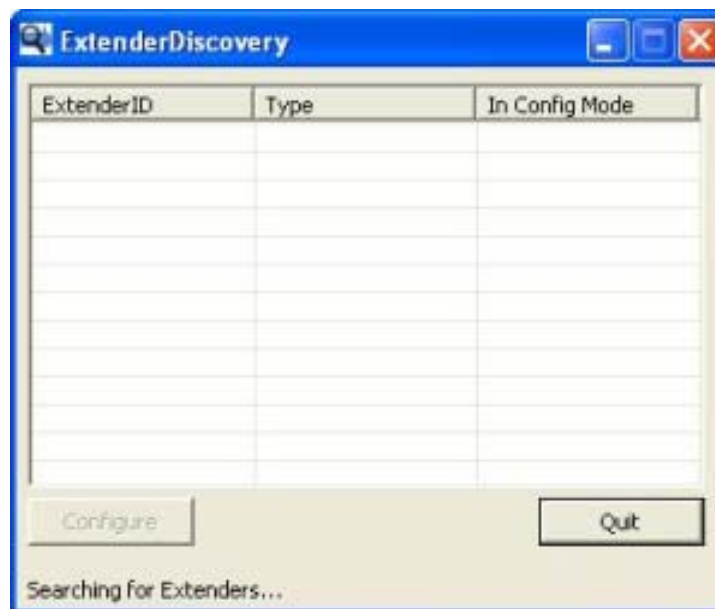
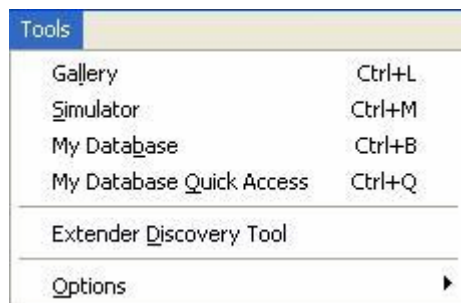
Pronto Edit Professional toolbar

- My Database Quick Access:
This Tool will help you adding IR codes on the buttons in MyDatabase using drag and drop.

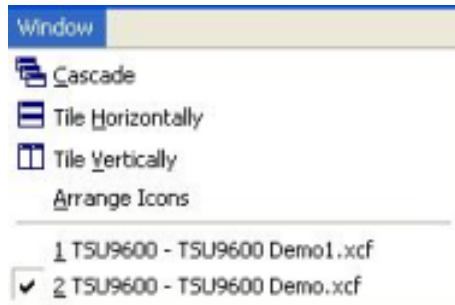


Pronto Edit Professional toolbar

- The Extender Discovery Tool will search for extenders on the network and shows their settings.



Pronto Edit Professional toolbar



- Opening different windows (.xcf files) from different projects simultaneous.
- Cascade/ Tile horizontally or vertically into one screen.

References

- Pronto + CCF + PCF + XCF + CODES
 - <http://www.pronto.philips.com>
 - <http://www.remotecentral.com>
- Logos
 - <http://www.satlogo.com>

