

# PHILIPS

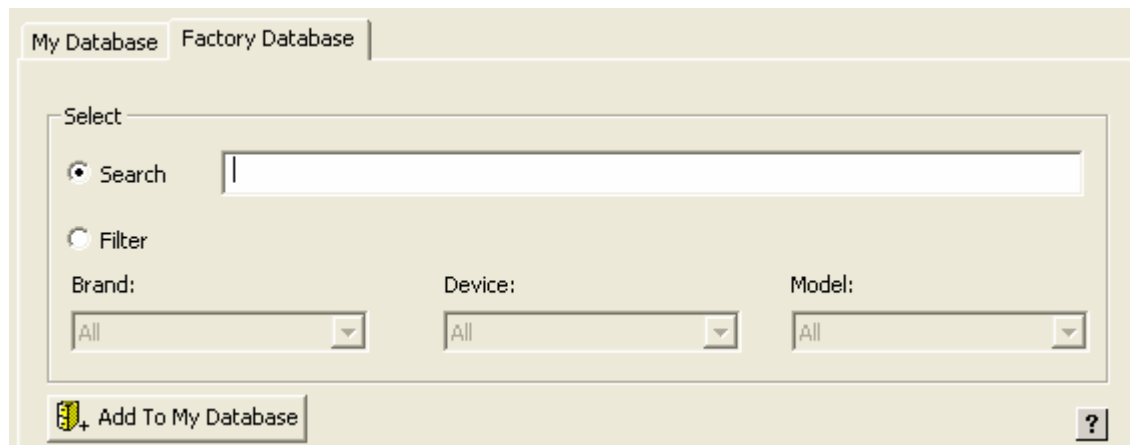


## Module D - Use the MyDatabase



# Take-away

- Know the difference between MyDatabase and the Factory database
- Know how to create your own MyDatabase and how to use it.

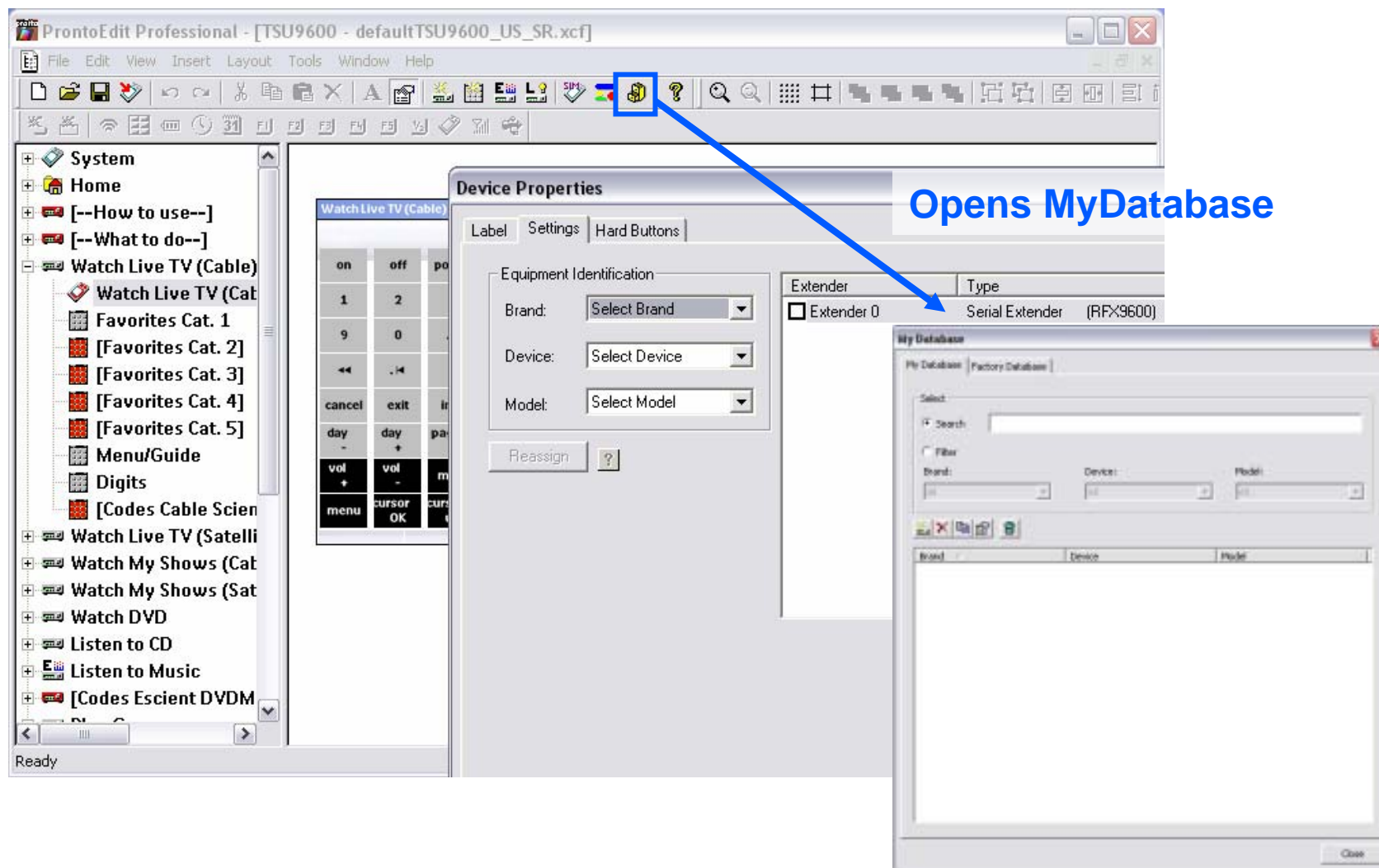


- Know how to drag and drop a code to a button using MyDataBase Quick access.

# What is it?

- A database containing the devices you install
- You add your own devices:
  - Or use the extensive model number based factory database
  - Import legacy Pronto files
  - Direct learn using the fast learn wizard
  - Directly enter HEX-codes, RC5/RC6
- You manage the functions completely:
  - Name
  - Number of functions
  - Code duration
- You can now re-brand a complete device with one click
- You can use the same database for different installers of your company

# How does it work?

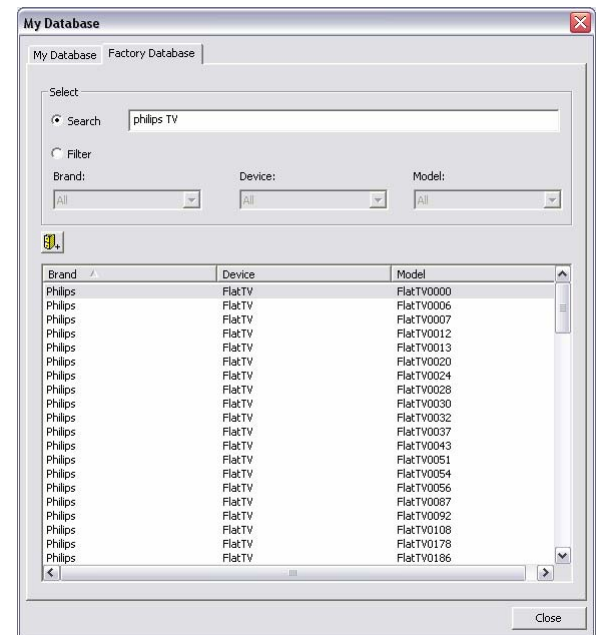
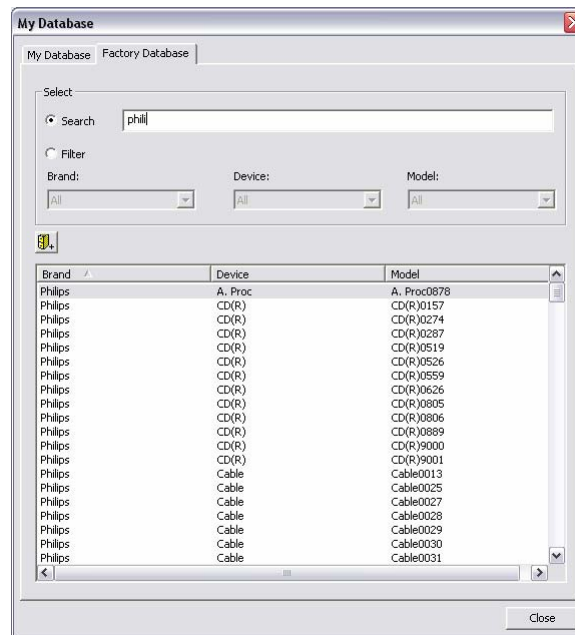
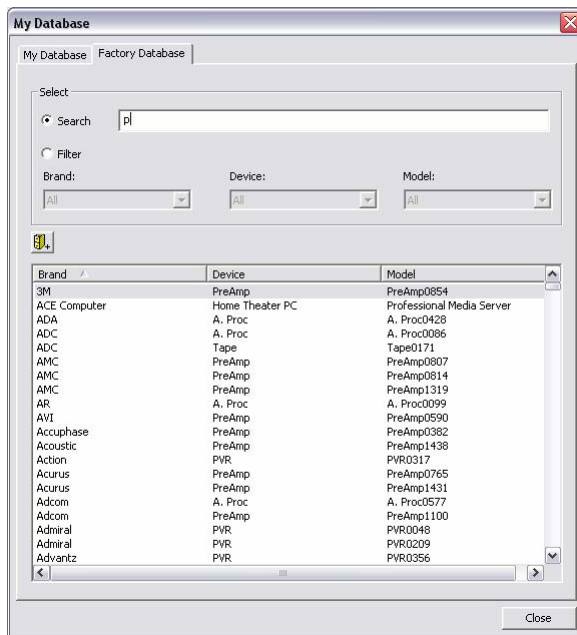


# The Factory Database vs. MyDatabase

- MyDatabase:
  - Managed by you
  - Completely adaptable to your personal equipment list
- Factory Database:
  - Provided by Philips
  - Regular updates with latest information will be available

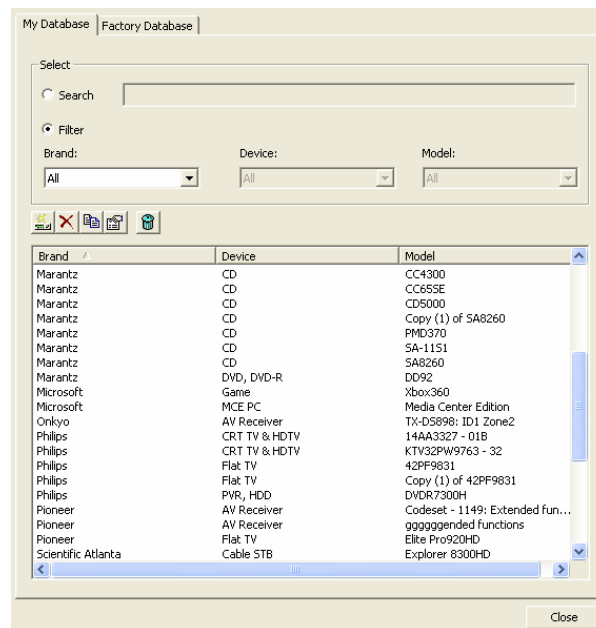
# The Factory Database details

- Smart search algorithm:
  - Instantaneous filter while typing
  - Philips TV or TV Philips will both give the same listing




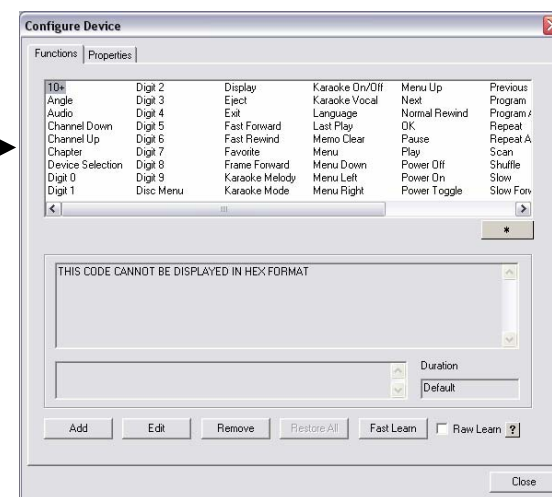
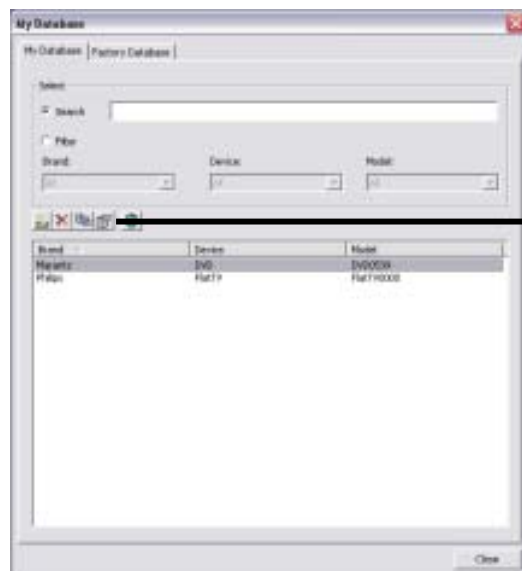
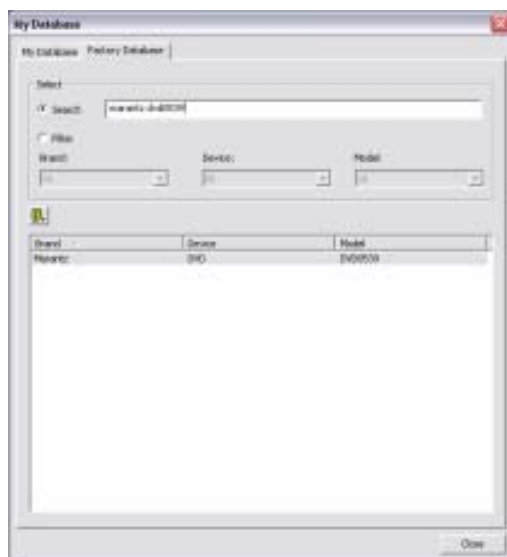
# Building MyDatabase

- Options:
  1. Device is in the Factory Database
  2. Device type is already in MyDatabase
  3. Copy from an existing CCF/PCF/XCF
  4. Complete new device




# Device is in the Factory Database

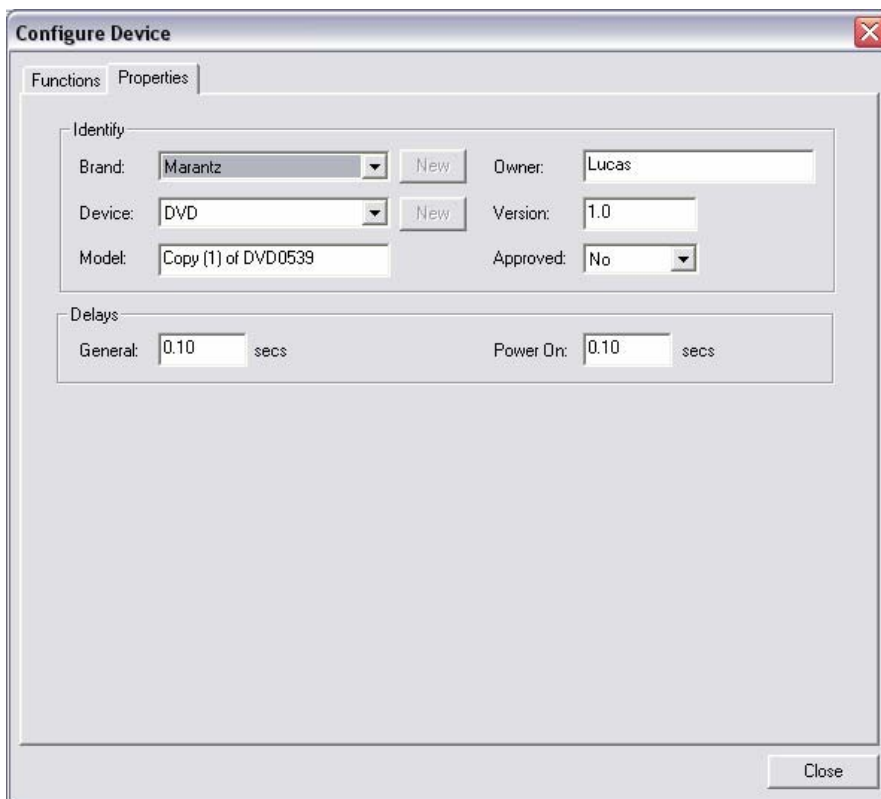
- Locate device using smart search
- Press 
- The device is added to MyDatabase
- Adapt the device by opening its properties





# Device type is already in MyDatabase

- Select device and press  (duplicate)
- Open its properties and adapt model nr.



The 'Configure Device' dialog box has two tabs: 'Functions' and 'Properties'. The 'Properties' tab is active. It contains two sections: 'Identify' and 'Delays'.

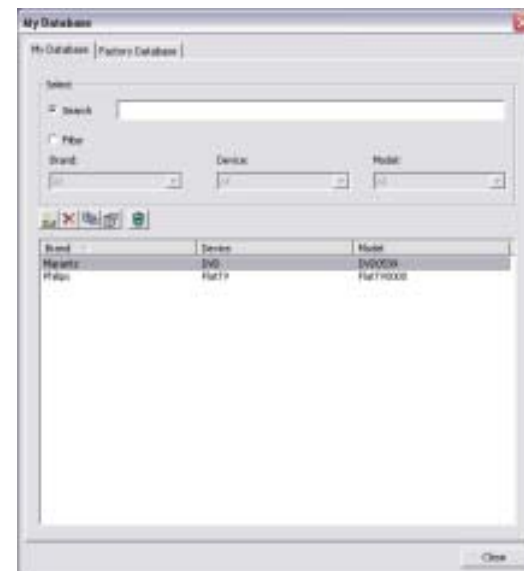
**Identify section:**

- Brand: Marantz (dropdown menu) with a 'New' button.
- Device: DVD (dropdown menu) with a 'New' button.
- Model: Copy (1) of DVD0539 (text field).
- Owner: Lucas (text field).
- Version: 1.0 (text field).
- Approved: No (dropdown menu).

**Delays section:**

- General: 0.10 secs (text field).
- Power On: 0.10 secs (text field).

A 'Close' button is located at the bottom right of the dialog.

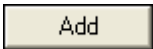


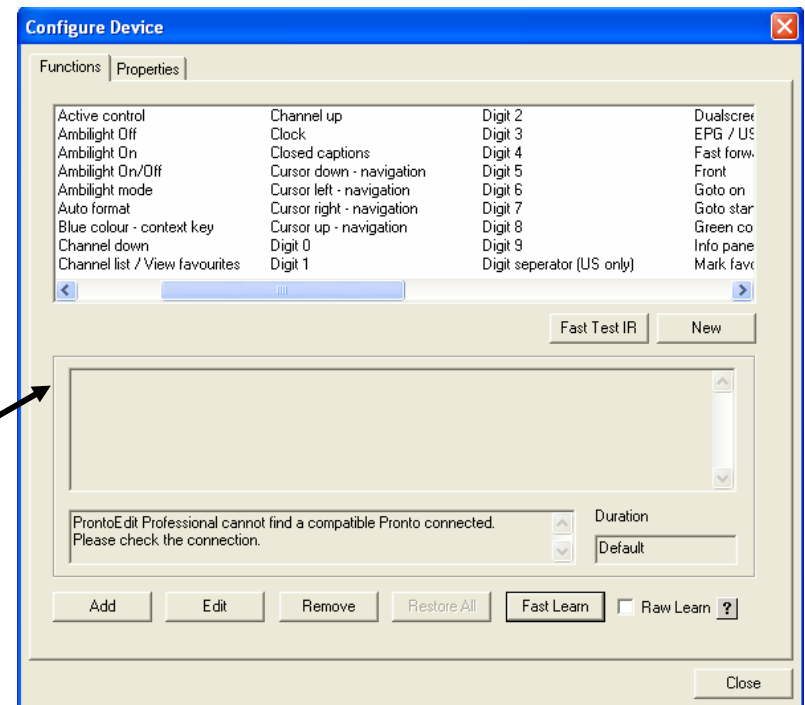
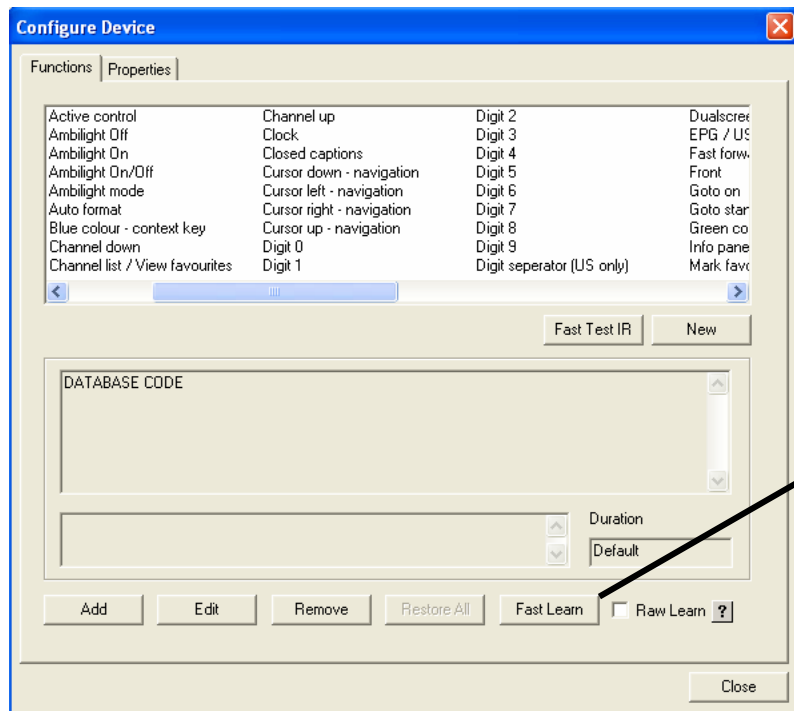
The 'My Database' window shows a table with three columns: Brand, Device, and Model. The table contains two rows of data.

Brand	Device	Model
Marantz	DVD	DVD0539
Philips	Flat TV	Flat TV0000


There is a 'Close' button at the bottom right of the window.

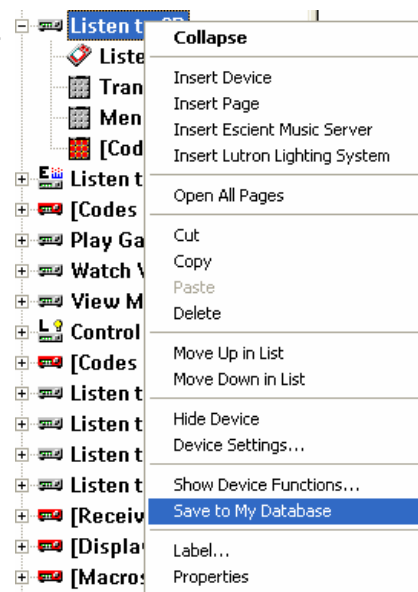
# Device type is already in MyDatabase –ctd

- Select the functions
- Delete all not needed functions
- Add extra functions, by pressing 
- Use the Fast Learn wizard to learn new buttons

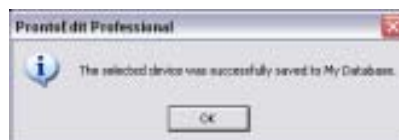


# Copy from an existing CCF/PCF/XCF

- Open the configuration file
- If needed import PCF / CCF to XCF
- Right click on the device containing the codes
- Use 
- Fill in the device details



- All buttons are copied in MyDatabase: button label becomes function name



# Complete new device

- Only do this when you can not find a suitable device-template.
- Open MyDatabase and press



**Configure Device**

Functions Properties

Identify

Brand:  New

Device:  New

Model:  Approved:

Delays

General:  secs Power On:  secs

Close

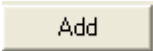
**Add New Brand**

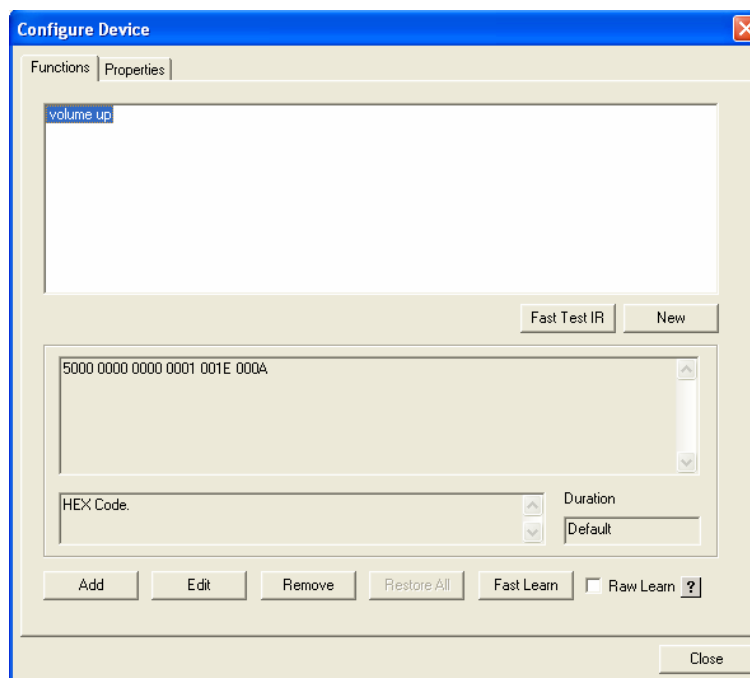
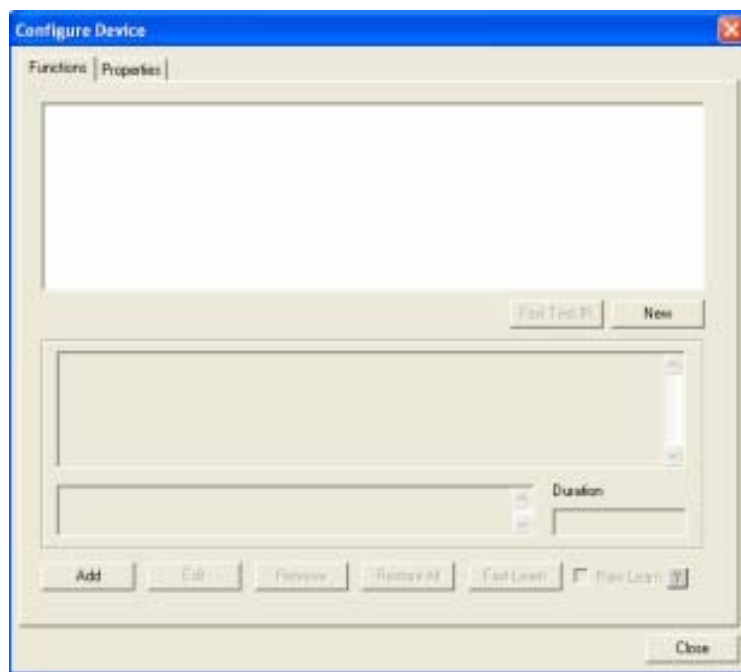
OK Cancel

**Add New Device**

OK Cancel

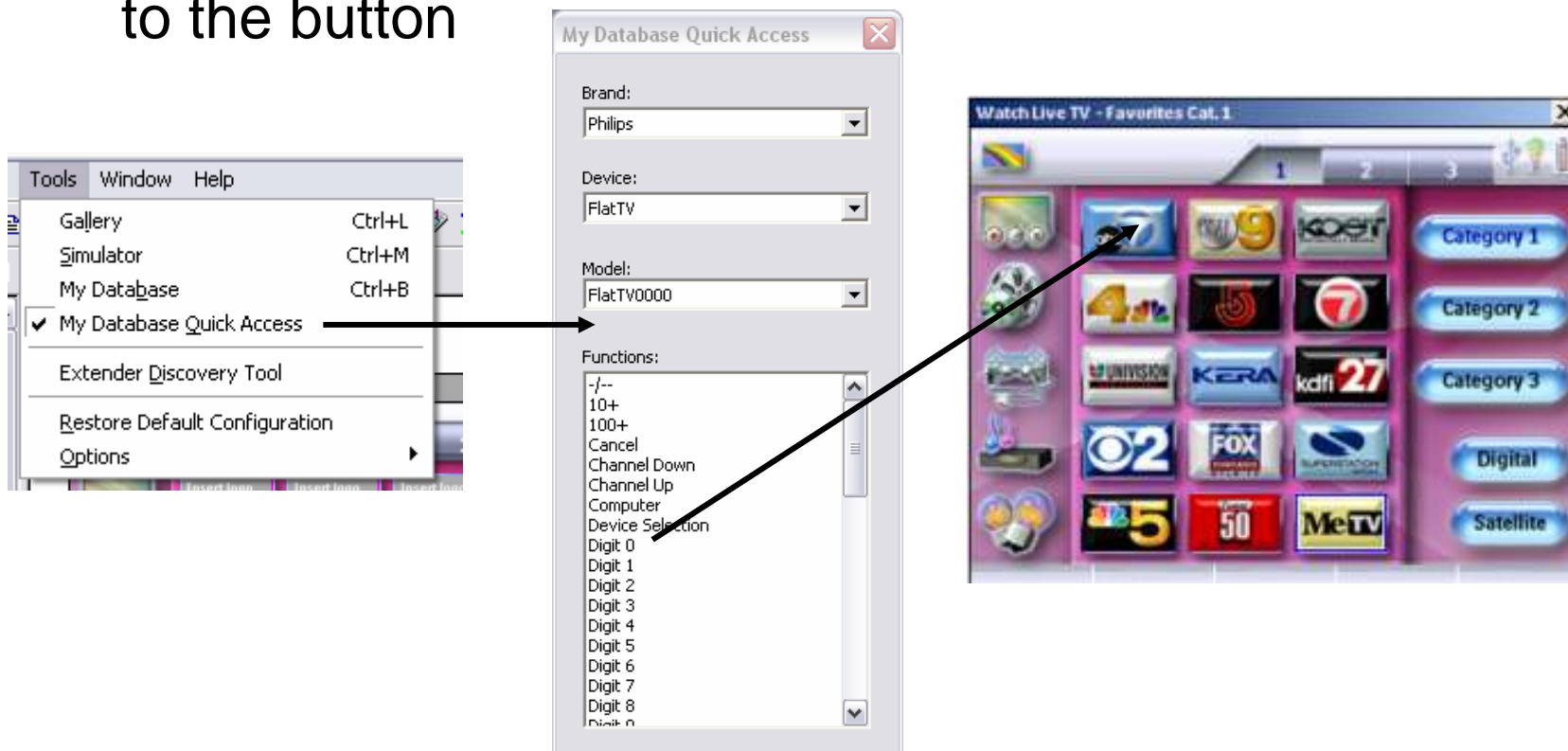
# Complete new device - ctd

- Open functions (completely empty)
- Use the  to add functions
- Use the Fast Learn wizard to add all needed IR codes



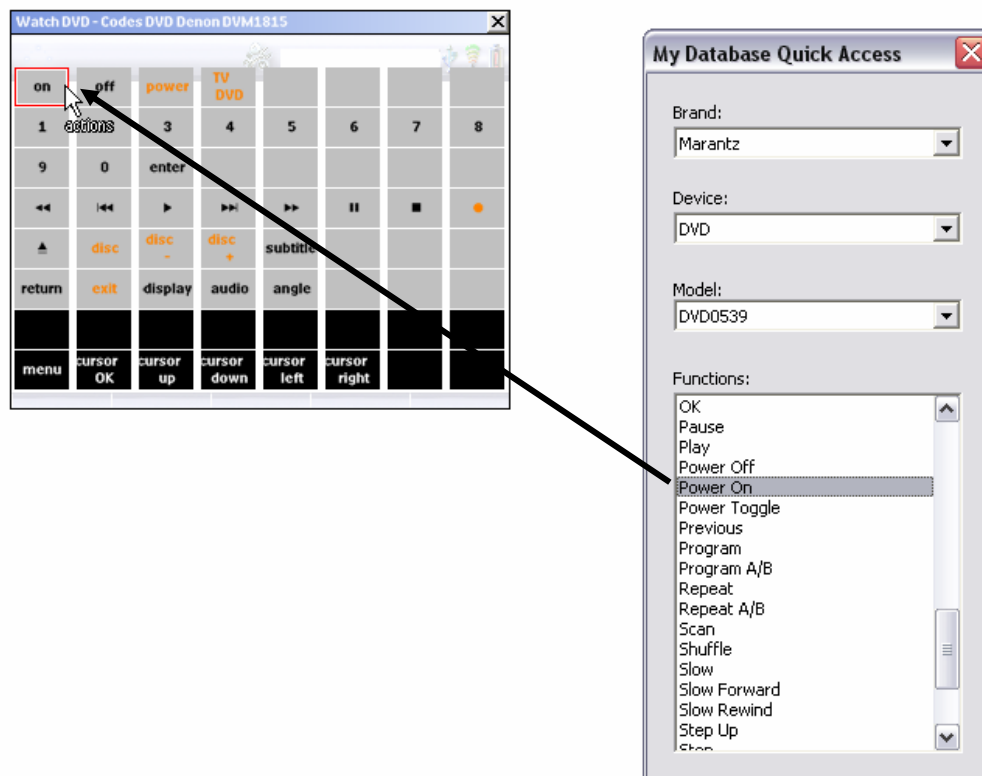
# Using MyDatabase Quick Access to drag functions on buttons

- How:
  - Open My Database Quick Access and drag the function to the button



# Using MyDatabase Quick Access to drag functions on buttons - ctd

- How:
  - Drag functions from the list to the button:
    - This will replace the complete action list of the button



# Backup My Database

- Make a backup of MyDatabase.
  - This will be saved as a .db file

