

Importing an image gallery file



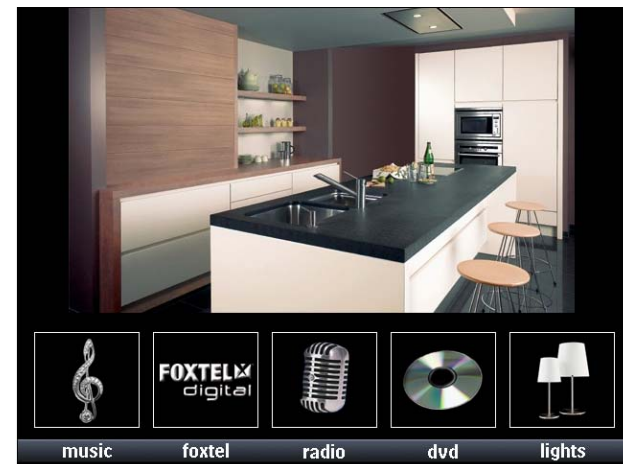
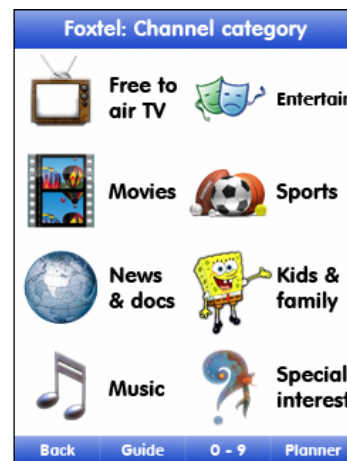
Importing an image gallery file

QualiFi employs graphic artists to create button images and design templates that makes working with Pronto and Marantz control products faster, simpler and more intuitive for the end user.

To take advantage of these great image/button galleries you'll need to import the '.gef' files into the appropriate software editing package that suits the control system you're using.

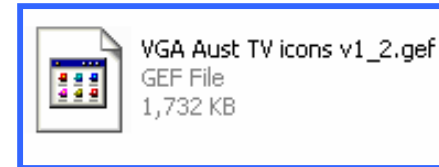
These gallery files can be found in the member's section at www.in-control.com.au website for various resolutions along with complete example configuration files that you can freely use.

Models such as the Marantz RC9001 and the Philips Pronto TSU9600 will display VGA graphics whilst the Marantz RC9500, RC5400 & the Philips TSU9400, RU990 & RU960 will display QVGA graphics

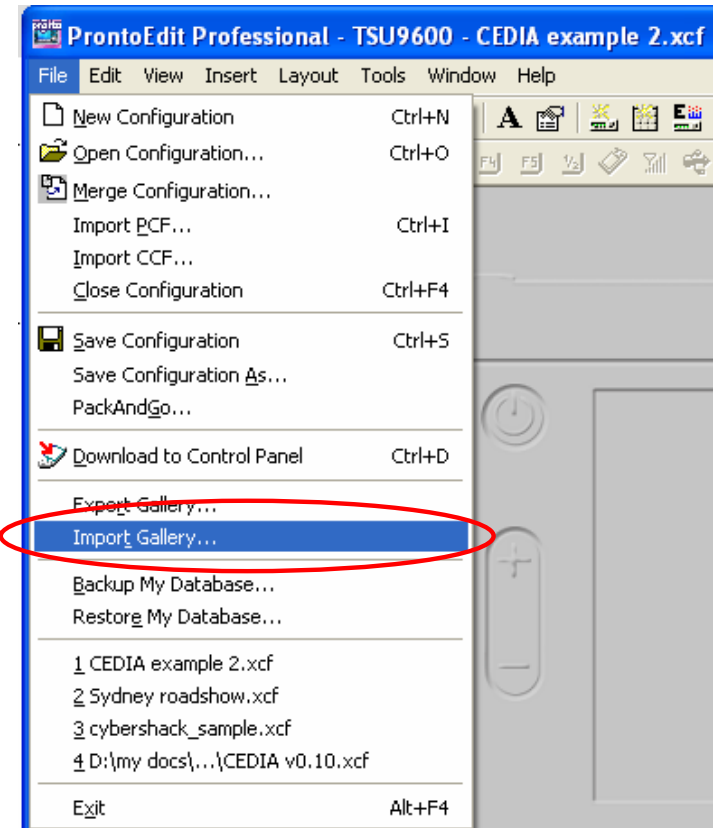


Importing an image gallery file cont.

1. The first step is to download the image gallery file and note where it is found on your computer. It should look something like pic. 1.
2. Next open the appropriate control's software editor – in this example we'll use ProntoEdit Professional.
3. Click on the 'file' menu option and then select and click on the 'import gallery' option. See pic. 2 . . .



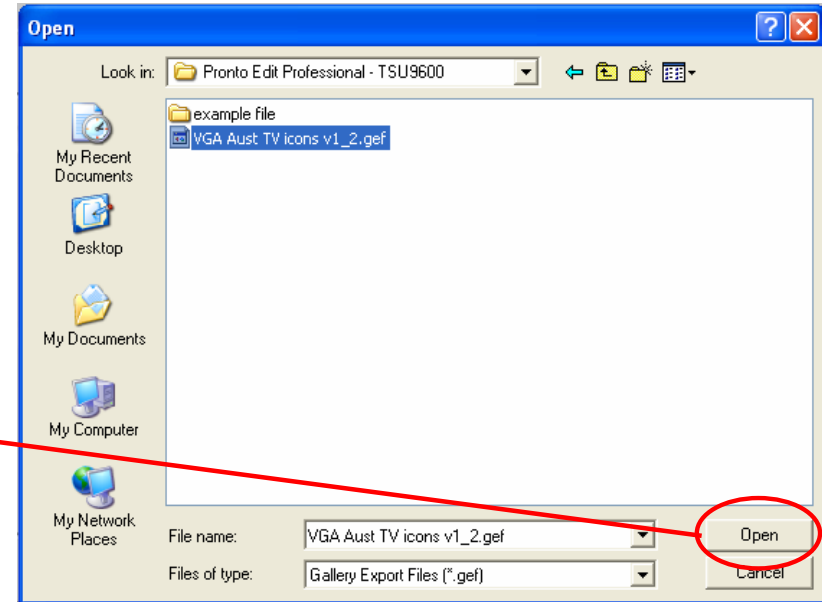
pic. 1



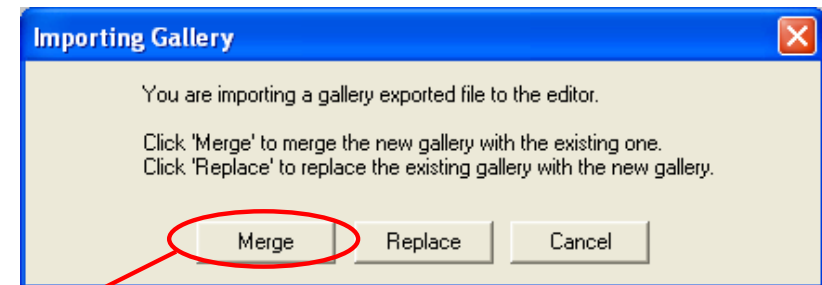
pic. 2

Importing an image gallery file cont.

4. The window as seen in pic. 3 will appear and you'll need to navigate to the location of the gallery file that you'd like to import into the software editor.
5. When you've locate the appropriate '.gef' file select it and click the 'open' button.
6. You'll now see the 'importing gallery' window pop up in the editing software as seen in pic. 4 . . .
7. **Warning!** If select replace, your existing image gallery will be deleted and only the contents of the new gallery will be available for use.



pic. 3



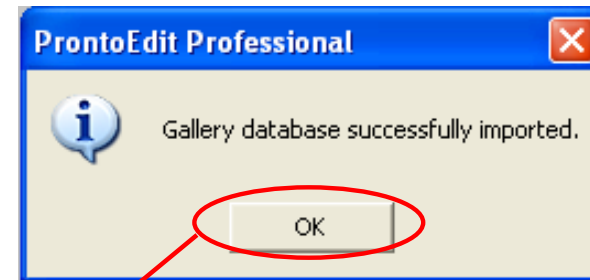
pic. 4

We advise you to merge the gallery into the existing gallery that is present when you install your control's software editor.

Importing an image gallery file cont.

8. The importing process can take a number of minutes to complete. This will vary depending on your computer's abilities and the size of the gallery being imported.

When the gallery has been successfully imported you'll see this small notification window pop up in your control's editing software. See pic. 5 . . .



pic. 5

9. Simply click the 'ok' button and you're done!



pic. 6

10. To access the gallery simply click on the 'gallery' button found on the tool bar at the top of the control's editor screen. (looks like this – see pic. 6).

Now simply drag and drop buttons and images directly from the gallery's window to the page you're configuring.

Enjoy using your new gallery!

